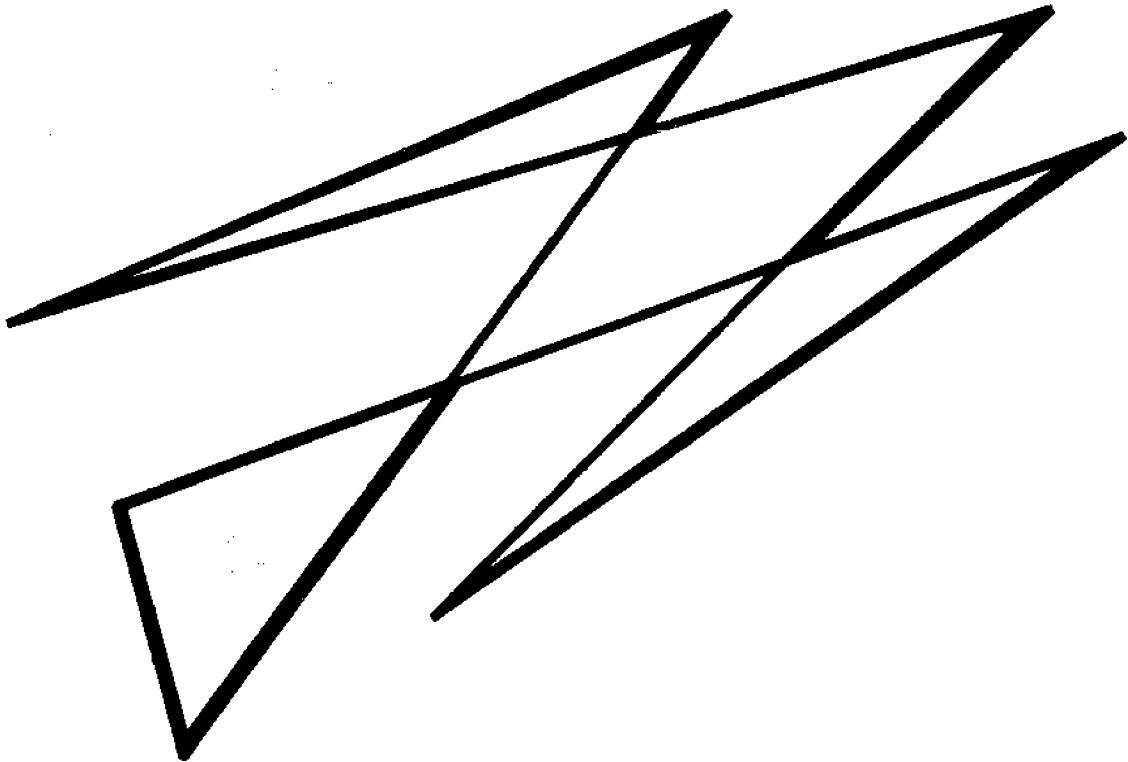




South Australia Economic Indicators





SOUTH AUSTRALIAN ECONOMIC INDICATORS

MARCH 1994

P.M. GARDNER
Deputy Commonwealth Statistician
and Government Statist

© Commonwealth of Australia 1994

PREFACE

South Australian Economic Indicators is a monthly publication which contains the latest available data at the time of preparation for a range of statistical series that have been identified as indicators of economic activity in this State.

Written and graphic commentary have been included for many of the selected series and analysis has been augmented with the calculation of the percentage change from the previous reference period together with the presentation of comparative Australian data. Time series information has been included to provide a historical perspective on many of the selected indicators. This issue has been expanded to provide more detailed commodity data on South Australian produced exports than was available in previous months. Future issues may be expanded to include further historical data in response to expressed user needs. This product is under continuous review and any suggestions for enhancement will be welcomed.

More detailed information on each series (including explanatory and technical notes) can be obtained from other Australian Bureau of Statistics publications or alternative data sources. To assist those seeking further information a source publication for each of the series has been documented in the statistical summary.

This issue includes a special article entitled *Retailing in South Australia*. Future issues will contain further articles on statistical topics which concentrate on longer term trends or other issues pertinent to the South Australian economy.

If you have any inquiries concerning this publication please contact the editor, Brian Moody, telephone (08) 237 7315. All requests for statistical information should be directed to the ABS Information Service, GPO Box 2272 Adelaide SA 5001, telephone (08) 237 7100.

P.M.GARDNER
*Deputy Commonwealth Statistician
and Government Statist*

Australian Bureau of Statistics
Adelaide
February 1994



CONTENTS

| | Page |
|---|-----------|
| Preface | iii |
| REVIEW | 2 |
| Overview | |
| State accounts | |
| International accounts | |
| Consumption and investment | |
| Production | |
| Prices | |
| Labour force and demography | |
| Incomes | |
| Financial markets | |
| STATISTICAL SUMMARY | 12 |
| State accounts | |
| International accounts | |
| Production | |
| Prices | |
| Labour force and demography | |
| Incomes | |
| Financial markets | |
| FOCUS | 14 |
| Retailing in South Australia | |
| TIME SERIES | |
| Merchandise exports by commodity group | 16 |
| Merchandise exports by country of consignment | 17 |
| Merchandise imports by commodity group | 17 |
| Turnover of retail establishments by industry | 18 |
| New motor vehicle registrations by type of vehicle | 20 |
| Actual private new capital expenditure by selected industry and type of asset | 21 |
| Building approvals | 22 |
| Building commencements | 23 |
| Value of building work done during period | 23 |
| Production, livestock and selected commodities | 24 |
| Consumer price index, by group | 26 |
| Average retail prices of selected consumer items | 27 |
| Estimated resident population and components of population change | 27 |
| Labour force status of the civilian population | 28 |
| Average weekly earnings of employees | 29 |
| Tourist accommodation | 30 |
| Finance commitments | 31 |
| For more information | 32 |

REVIEW

Overview

- The total value of housing finance commitments for owner occupied dwellings in December 1993 was 13.9% above the November figure and the highest ever recorded.
- Although the trend estimate for employed persons in South Australia rose slightly in January 1994, the trend unemployment rate continued the upward movement which has been evident from September 1993.
- In seasonally adjusted, constant price terms retail sales for the December quarter 1993 were 4.2% higher than for the corresponding quarter of the previous year.
- The value of overseas exports of South Australian produced commodities during the six months to December 1993 was similar to the level for the same period in the previous year.
- The growth rate of State Final Demand rose by 1.0% in the September quarter 1993 which was well above the Australian average of 0.3%.
- Provisional trend estimates for December 1993 indicate a continuation of the decline in new motor vehicle registrations in South Australia, but the rate of decline has been easing in the past three months.
- The provisional trend estimate for the total number of dwelling units approved in December 1993 continued the downward movement evident since January 1993.

State Accounts

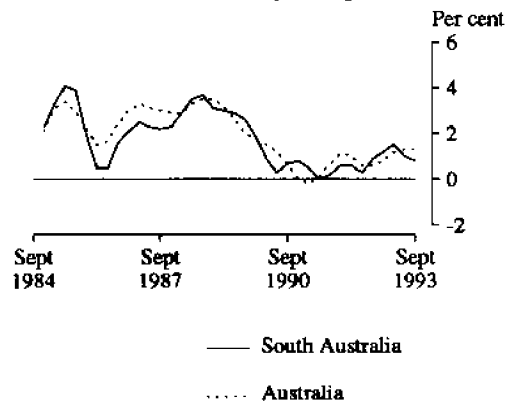
The estimates for Gross State Product (GSP) and State Final Demand (SFD) in seasonally adjusted and trend constant prices were published for the first time for the September quarter 1993. Further information is available in *Australian National Accounts: State Accounts* (5242.0).

Gross State Product

Trend estimates show that the rate of growth in Gross State Product (0.8%) continued to slow in the September quarter 1993 after the more substantial rises recorded in the previous December and March quarters (1.6 and 1.5% respectively). However, the growth rate over the year to September quarter 1993 (5.0%) remained above that for Australia (4.7%).

Gross operating surplus fell 0.7% in the September quarter 1993 continuing the slow down from the strong growth recorded in the December and March quarters (2.9% and 2.3% respectively).

GROSS STATE PRODUCT - TREND Quarterly Change



State Final Demand

The growth rate of State Final Demand (trend estimates expressed in 1989-90 prices), continued to increase in the September quarter 1993 rising by 1.0%, significantly higher than the Australian average of 0.3%.

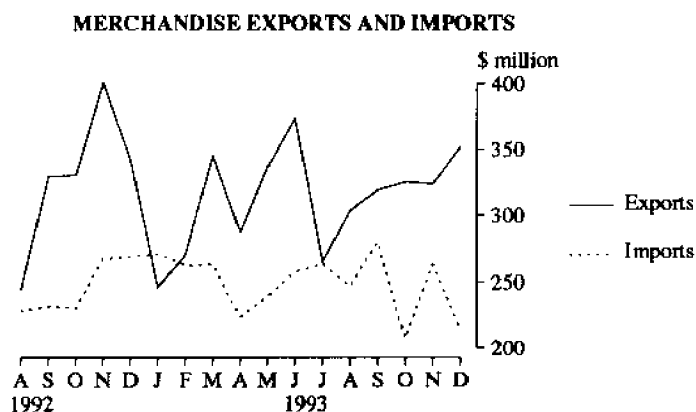
In the private sector, strong growth was recorded in dwelling and non-dwelling construction, increasing by 5.6% and 4.2% respectively. Private final consumption expenditure increased 0.9% in the quarter, marginally higher than the Australian average of 0.6%.

In the public sector, gross fixed capital expenditure declined 8.1%, while consumption expenditure increased 2.4%.

International Accounts

Exports

Overseas exports of South Australian produced commodities during the six months to December 1993 were valued at \$1,890.5 million which was similar to the level for the same period in the previous year. In 1993 the total value of overseas exports from South Australia was \$3,750.5 million which was 1.1% higher than the 1992 figure.



Imports

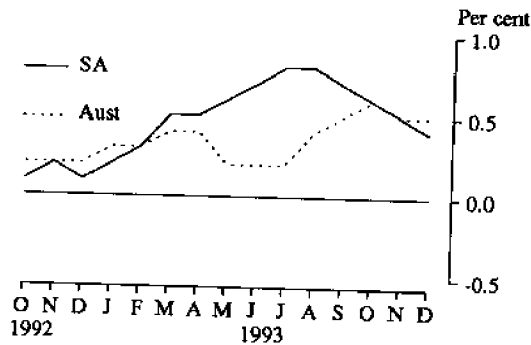
Overseas imports into South Australia during the six months to December 1993 (compiled from import documents lodged in South Australia) were valued at \$1,477.3 million, 4.7% below the level for the same period in the previous year. However, the value of total imports for 1993 was \$2,995.4 million which was an increase of 8.6% over the 1992 figure.

Consumption and Investment

Retail Turnover

Trend estimates indicate that retail sales for South Australia grew by 0.4% in December 1993 compared with a growth rate for Australia of 0.5%. Sales growth has been experienced in grocery stores; hotels, liquor stores and licensed restaurants; clothing and fabric stores and footwear stores while sales have been declining in butchers and pharmacies. The retail turnover estimate in original terms for South Australia was \$868.4 million for December, an increase of 30.4% from the November level of \$665.9 million. In seasonally adjusted, constant price terms the estimate for the December quarter 1993 rose 4.2% from the corresponding quarter of the previous year.

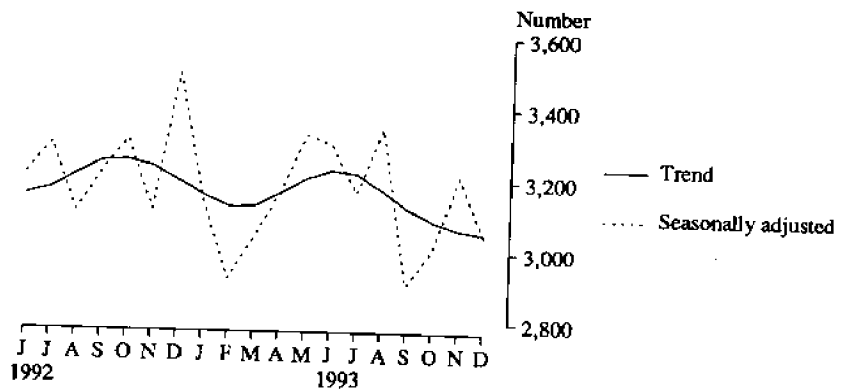
**RETAIL TURNOVER
PERCENTAGE CHANGE FROM PREVIOUS MONTH
TREND ESTIMATES**



New Motor Vehicle Registrations

Provisional trend estimates for December 1993 show a continuation of the decline in new motor vehicle registrations in South Australia. However, the rate of decline is easing. The estimate fell by 0.4% between November and December 1993, after respective falls of 1.5%, 1.2% and 0.8% in the previous three months. In original terms there were 3,172 new motor vehicles registered in December 1993, 14.7% less than in December 1992.

NEW MOTOR VEHICLE REGISTRATIONS



Tourist Accommodation

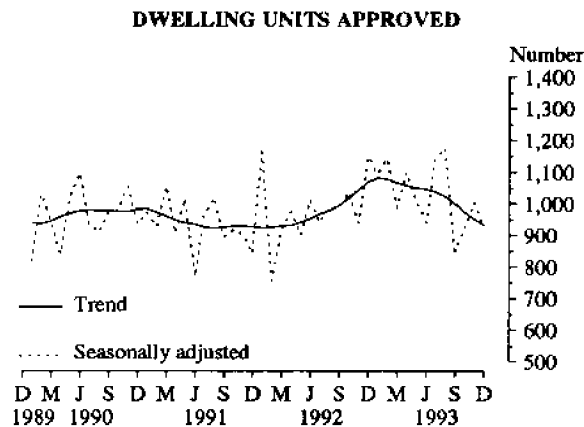
When the September quarter 1993 is compared with the September quarter 1992, rooms available in hotels, motels and guesthouses in South Australia decreased by 1.3 per cent. However, the room occupancy rate overall rose from 45.1 per cent to 46.8 per cent with star grade four establishments increasing by 9.5 percentage points and star grade five by 12.3 percentage points. Takings increased by 8.9 per cent to \$33.1 million, with star grade four and five establishments recording an increase of 29.1 per cent. Average takings per room night occupied rose 6.4 per cent from \$68 to \$73.

Private New Capital Expenditure

Private new capital expenditure for the September quarter 1993 was \$422 million, an increase of 5.8% from the previous quarter. The estimate for the twelve months ended September 1993 was \$1,529 million, an increase of 9.4% over the twelve months to September 1992. The Australian estimate for the same period showed an increase of 9.6%.

Production*Dwelling Approvals*

The provisional trend for the total number of dwelling units approved in December 1993 was 934 dwellings for South Australia and 15,107 Australia wide. This latest estimate for South Australia is a continuation of the decline evident since January 1993. On the contrary the national estimate has displayed growth each month since June 1993. However, a fall of just 1% in the seasonally adjusted number of dwelling units approved in January 1994 would cause the Australian trend to flatten.

*Dwelling Commencements*

The number of dwelling units commenced in South Australia based on findings of the Building Activity Collection has been steadily rising throughout 1992 and 1993. In the September quarter 1993 3,198 dwellings were commenced, an increase of 5.8% from the (revised) June estimate of 3,024. South Australian dwelling commencements accounted for 7.0% of the Australian total in the September quarter.

Value of Non-residential Building Approvals

The December 1993 value of non-residential building approved in South Australia was \$27.4 million, down 9.9% from \$30.4 million in the previous month. There was a corresponding drop in the number of building jobs approved in December. The value of non-residential building approved throughout Australia improved by 14.1% in December and as a result the South Australian contribution to the total fell to just 3.6%.

Value of Total Building Activity

The value of building work commenced (at current prices) during the September quarter 1993 was \$338.3 million. More than 78% of this was directed toward residential buildings where new residential work valued at \$233.4 million and alterations and additions worth \$30.9 million were commenced.

The value of work done (at current prices) during the September quarter was \$400.3 million. This represents a slight increase of 3.0% from the preceding month. The value of residential work increased by more than 10% in contrast to the falls in residential alterations and non-residential building. A contraction in the work done on offices was primarily responsible for the downward movement in the non-residential category.

The value of work yet to be done (at current prices) at the end of the September quarter 1993 was \$362.7 million, a decrease of 12.1% from the previous quarter. This was a direct result of a fall in the value of non-residential work to be done, particularly in the Educational and Offices categories.

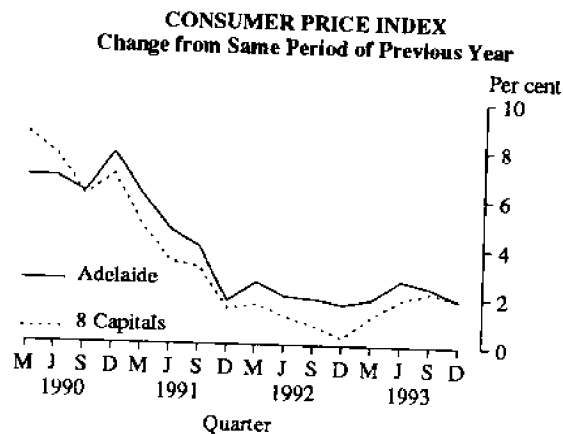
Value of Engineering Construction

The September quarter 1993 estimate for the value of engineering work done in South Australia was a modest \$170.4 million, which was 35.3% down from the revised June quarter estimate. The Australian estimate declined also in the September quarter by 19.1% to \$2843.0 million. In South Australia activity was lower in most construction categories with the most noticeable reduction recorded by roads, highways and subdivisions which had exhibited strong growth early in 1993.

Prices

Consumer Price Index

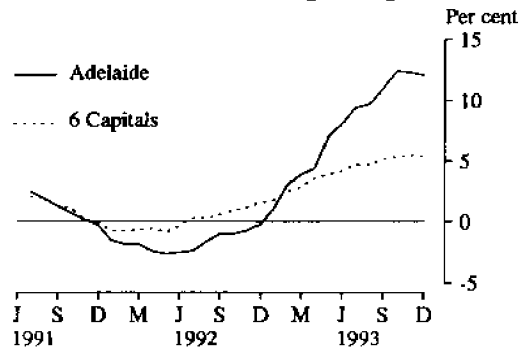
In the December quarter 1993 the all groups Consumer Price Index (CPI) for Adelaide rose 0.1%, resulting in an annual increase of 1.9%. Nationally prices rose 0.2% for the quarter and 1.9% on an annual basis. Some interesting movements in Adelaide were: butter (up 9.3%), furniture (up 5.7%), veterinary services (up 4.0%) and overseas holiday and accommodation (up 6.4%). Movements in local government rates and charges are reflected in the CPI in the December quarter only and they showed a rise of just 1.8% from the previous year. Prices fell for pharmaceuticals (down 5.4%), mortgage interest charges (down 5.2%) and consumer credit charges (down 3.0%).



House Building Materials

Prices of house building materials in Adelaide increased by 1.3% over the three months to December 1993, compared with a rise of 0.7% nationally. The rate of price increases in Adelaide appears to have slowed in recent months, but on an annual basis Adelaide prices rose 12.1% compared with 5.4% nationally.

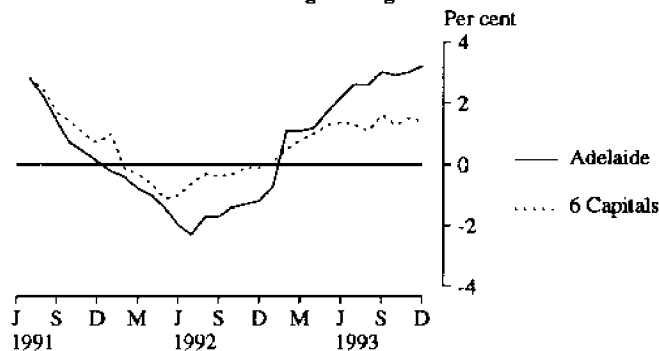
**PRICE INDEX OF MATERIALS USED IN
HOUSE BUILDING**
Annual Percentage Change



Non-House Building Materials

Over the three months ended December 1993 prices of materials used in building other than house building rose by 0.3% in Adelaide compared with zero movement for the weighted average of the six State capital cities. Over the twelve months prices in Adelaide rose 3.2% compared with 1.4% nationally. Over the calendar year prices of structural timber rose 49.6%, and ready-mixed concrete prices rose 11.8%. Prices for non-ferrous pipes and fittings, and paint and other coatings, fell by 9.6% and 4.2% respectively.

**PRICE INDEX OF MATERIALS USED IN BUILDING
OTHER THAN HOUSE BUILDING**
Annual Percentage Change



House Prices

In the September quarter 1993 prices of established houses in South Australia fell 7.0% while prices of project homes rose 3.4%. The movement in the prices of established houses should be viewed as a short-term adjustment following rises over the previous two quarters. On an annual basis prices of established houses rose 0.6% while prices of project homes rose 4.0% compared with 2.7% and 2.8% nationally.

Labour Force and Demography

Population

The estimated resident population of South Australia increased by 1,667 persons during the June quarter 1993 to 1,461,721. South Australia experienced a natural increase of 2,479 persons, a gain partially offset by a net interstate migration outflow of 850 persons. There were 5,005 live births during the June quarter, the highest level since the March quarter of 1991.

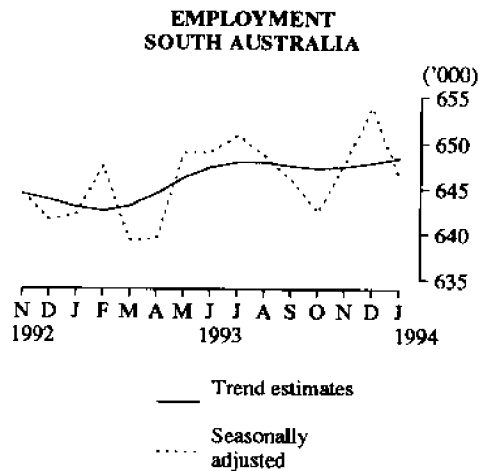
The net gain from overseas migration of 38 persons in the June quarter was 1,004 lower than in the previous quarter, however, South Australia was one of only three States and Territories to experience a net gain.

During 1992-93 the growth rate for South Australia was 0.4% compared with 1.0% for Australia. Victoria had the lowest rate of population growth at 0.3%.

Employment

The underlying trend estimate for employed persons in South Australia rose slightly to 648,400 in January 1994, continuing the upward movement evident since November 1993.

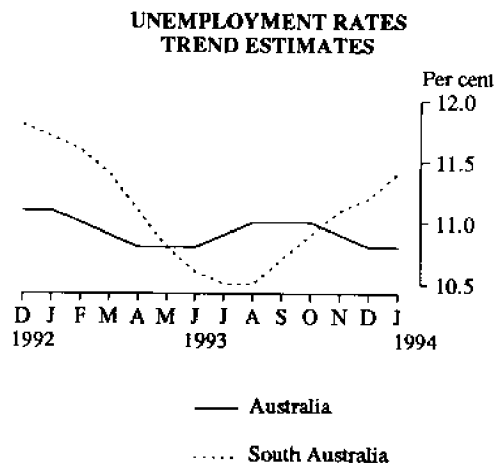
The underlying trend estimate of employed persons in Australia has been increasing since February 1993 and currently stands at its highest level since September 1990. The full-time employment estimate has been increasing since July 1993.



Unemployment

The trend unemployment rate for South Australia increased to 11.4% in January 1994. This continued the upward trend evident since September 1993. The trend unemployment rate for males and females increased to 12.0% and 10.5% respectively.

In January 1994, the trend estimate of the unemployment rate for Australia remained at 10.8%.



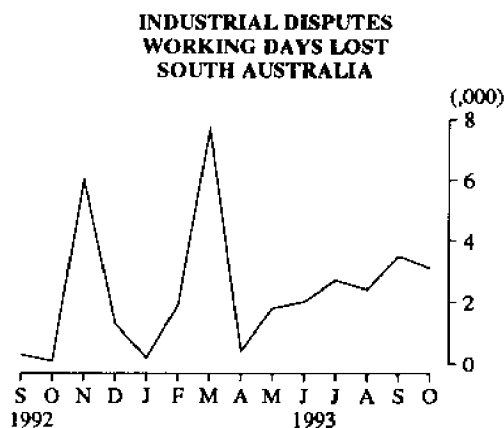
Overtime

The percentage of employees who worked overtime in South Australia in November 1993 was 18.0 per cent compared with 17.8 per cent in November 1992.

Over the twelve month period to November 1993, significant increases in the percentage of employees working overtime occurred in the following industries: construction; wholesale trade; transport and storage; communication; and public administration and defence. Notable decreases occurred in the mining and community services industries.

Industrial Disputes

Working days lost through industrial disputes in South Australia decreased to 3,100 days in October 1993, compared with 3,500 days for September 1993. At only 3.9% of the national total, South Australia has a relatively low level of industrial disputation.

**Short-term Overseas
Visitors Arrivals**

Total short-term visitor arrivals to Australia in October 1993 numbered 267,215. This was 19.3% higher than the previous month and was 16.5% higher than in October 1992. The trend estimate increased by 0.5% from September 1993. It is interesting to note that large increases have occurred in numbers of visitors from Korea, Thailand and Taiwan in October 1993 compared with the previous October.

Short-term visitor arrivals to South Australia in October 1993 fell by 6.4% from September 1993 to a total of 5,554. This figure was 12.2% higher than in October 1992.

The State or Territory of stay of overseas visitors is determined from the intended address reported on arrival in Australian ports and airports. A short-term visit is any intended length of stay less than 12 months.

Short-term Resident Departures

Short-term departures of South Australian residents decreased to 8,167 in October 1993, which was 34.3% less than in September 1993 and 18.7% less than in the previous October.

Departures of Australian residents in October 1993 fell to 176,937, a decrease of 22.7% from September 1993 but still 2.2% higher than the October 1992 figure. The trend estimate increased 0.2% between September and October 1993.

Incomes**Average Weekly Earnings**

Average weekly ordinary time earnings of full-time employees in South Australia increased slightly to \$603.30 in August 1993, up from \$589.00 in May 1993. Male ordinary time earnings increased to \$631.00 compared with \$610.00 for the previous quarter. Female earnings increased slightly to \$546.90.

Average weekly total earnings for all employees continued the upward movement evident since February 1993, reaching \$503.10 in August 1993. This represents a 3.8% increase from May 1993.

Because it is an average of earnings across all employees changes in average weekly earnings may occur through changes in employment and overtime as well as changes in pay levels.

Award Rates of Pay

The weekly award rates of pay index for full-time adult employees in South Australia increased to 142.9 in December 1993, after having remained at 142.2 for the previous four months.

The largest annual movement of the index for full-time adult males occurred in the wholesale and retail trade industry with a 2.8% increase since December 1992. For adult females employed full-time, the wholesale and retail trade was again prominent, showing a 2.7% rise between December 1992 and 1993.

Financial Markets

Housing Finance

The total value of housing finance commitments for owner occupied dwellings in December 1993 was \$305.5 million. This was an increase of \$37.2 million (13.9%) on November 1993 and was the highest value ever recorded. The previous highest was \$284.6 million in September 1993.

SECURED HOUSING FINANCE COMMITMENTS TO INDIVIDUALS
SOUTH AUSTRALIA



Finance commitments for the construction and purchase of established dwellings increased by \$10.1 million (24.8%) and \$20.6 million (11.9%) respectively. Financing commitments for the purchase of newly erected dwellings fell slightly from \$21.0 million in November 1993 to \$20.2 million in December 1993.

Personal Finance

Personal finance commitments, for November 1993, totalled \$146.7 million. This was an increase of \$10.8 million (7.9%) on October 1993 and \$8.6 million (6.2%) on November 1992.

Personal finance commitments increased for both fixed and revolving credit facilities up \$10.4 million (11.6%) and \$0.5 million (1.1%) respectively. Under fixed loan facilities the most significant increase occurred in the category of used motor vehicles and station wagons up \$5.0 million to \$36.3 million in November 1993.

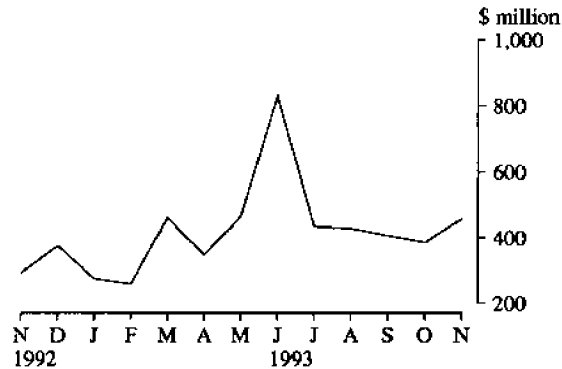
Commercial Finance

Total commercial finance commitments for November 1993 were \$456.9 million, \$68.8 million (17.7%) more than that recorded for October 1993.

Increases in commercial finance commitments were recorded for both fixed and revolving credit facilities up \$22.8 million (13.1%) and \$46.0 million (21.4%) respectively.

The most significant increase, under fixed loan facilities, occurred in the Construction industry (up \$7.7 million). The largest increase under revolving credit facilities was recorded in public administration (up \$51.7 million).

**COMMERCIAL FINANCE COMMITMENTS
SOUTH AUSTRALIA**

**Lease Finance**

In November 1993 the value of goods under new lease finance commitments totalled \$26.7 million an increase of \$7.3 million (37.6%) on October 1993.

The most significant increase in lease finance commitments was recorded for the category of electronic data processing equipment (up \$7.0 million to \$9.1 million). This was followed by motor vehicles which increased \$1.8 million to \$13.0 million in November 1993.

STATISTICAL SUMMARY

| Indicator | | Reference period | SOUTH AUSTRALIA | | | AUSTRALIA | | | SA as a % of Australia | Source index |
|---|------------|---------------------|-----------------|-----------------------|--------------------------------|-----------|-----------------------|--------------------------------|------------------------|--------------|
| | | | No. | % change | | No. | % change | | | |
| | | | | Over preceding period | Over same period previous year | | Over preceding period | Over same period previous year | | |
| State Accounts | | | | | | | | | | |
| Gross domestic product (I) | \$m | Sep. qtr 93 | 7,605 | 0.0 | 4.3 | 102,157 | 1.9 | 4.1 | 7.4 | 1 |
| Wages, salaries and supplements | \$m | Sep. qtr 93 | 3,930 | -1.3 | 1.9 | 51,054 | -1.4 | 1.0 | 7.7 | 1 |
| Private final consumption expenditure | | | | | | | | | | |
| Current prices | \$m | Sep. qtr 93 | 4,881 | 3.8 | 4.3 | 63,946 | 2.7 | 3.9 | 7.6 | 1 |
| 1989-90 prices | \$m | Sep. qtr 93 | 4,319 | 3.3 | 2.1 | 57,974 | 2.2 | 2.1 | 7.4 | 1 |
| Private gross fixed capital expenditure | \$m | Sep. qtr 93 | 945 | -0.4 | 10.7 | 14,700 | 1.9 | 8.3 | 6.4 | 1 |
| International Accounts | | | | | | | | | | |
| Exports (excluding re-exports) | \$m | Dec. 93 | 351.7 | 8.7 | 2.7 | 5,146 | -1.3 | -2.1 | 6.8 | 2 |
| Imports | \$m | Dec. 93 | 217.7 | -17.3 | -19.1 | 5,486 | -6.0 | 12.5 | 4.0 | 3 |
| Consumption and Investment | | | | | | | | | | |
| Retail turnover | | | | | | | | | | |
| Current prices original | \$m | Dec. 93 | 868.4 | 30.4 | 7.8 | 11,347.8 | 31.4 | 6.8 | 7.7 | 4 |
| Current prices trend | \$m | Dec. 93 | 644.4 | 0.4 | 6.9 | 8,386.8 | 0.5 | 4.6 | 7.7 | 4 |
| 1989-90 prices original | \$m | Dec. qtr 93 | 1,918.0 | 18.7 | 4.1 | 25,419.5 | 18.8 | 2.6 | 7.5 | 4 |
| New motor vehicle registrations | | | | | | | | | | |
| Original | No. | Dec. 93 | 3,172 | -9.1 | -14.7 | 48,536 | -3.1 | -1.1 | 6.5 | 5 |
| Trend | No. | Dec. 93 | 3,053 | -0.4 | -4.5 | 46,156 | 0.2 | 3.0 | 6.6 | 5 |
| Takings, licensed hotels, motels and guest houses with facilities | | | | | | | | | | |
| | \$'000 | Sep. qtr 93 | 33,133 | 6.3 | 8.9 | 672,163 | 9.8 | 8.3 | 4.9 | 6 |
| Private new capital expenditure | \$m | Sep. qtr 93 | 422 | 5.8 | 27.1 | 6,368 | -2.6 | 6.7 | 6.6 | 7 |
| Private new capital expenditure | \$m | 1992-93 | 1,581 | .. | -2.7 | 25,800 | .. | 6.4 | 6.1 | 7 |
| Expected private new capital expenditure | \$m | 6 Months to June 93 | 793 | .. | 14.1 | 12,083 | .. | 10.4 | 6.6 | 7 |
| Expected private new capital expenditure | \$m | 1993-94 | 1,203 | .. | -20.5 | 19,542 | .. | -21.0 | 6.2 | 7 |
| Production | | | | | | | | | | |
| Dwelling unit approvals | | | | | | | | | | |
| Original | No. | Dec. 93 | 925 | -8.8 | -19.2 | 13,693 | -15.3 | -2.5 | 6.8 | 8 |
| Trend | No. | Dec. 93 | 934 | -1.9 | -12.7 | 15,107 | 0.3 | 3.7 | 6.2 | 8 |
| Dwelling unit commencements | No. | Sep. qtr 93 | 3,198 | 5.8 | 14.4 | 45,801 | 7.5 | 12.7 | 7.0 | 9, 9a |
| Value of non-residential building approvals | | | | | | | | | | |
| | \$m | Dec. 93 | 27.4 | -9.9 | 10.4 | 767.4 | 14.1 | 11.2 | 3.6 | 8 |
| Value of total building activity | | | | | | | | | | |
| Commenced | \$m | Sep. qtr 93 | 338.3 | -6.8 | 1.9 | 6,255.3 | 3.0 | 16.3 | 5.4 | 9 |
| Work done | \$m | Sep. qtr 93 | 400.3 | 3.0 | 10.4 | 6,447.2 | 6.7 | 5.6 | 6.2 | 9 |
| Work yet to be done | \$m | Sep. qtr 93 | 362.7 | -12.1 | -20.1 | 7,950.4 | -2.6 | -3.3 | 4.6 | 9 |
| Value of engineering construction work done | | | | | | | | | | |
| | \$m | Sep. qtr 93 | 170.4 | -35.3 | 29.7 | 2,843.0 | -19.1 | 12.2 | 6.0 | 10 |
| Manufacturing production | | | | | | | | | | |
| Ready-mixed concrete | '000 cu. m | Nov. 93 | 71 | 2.9 | -5.8 | n.y.a. | n.y.a. | n.y.a. | n.y.a. | 11 |
| Electricity (SA and NT) | mill. kWh | Dec. 93 | 910 | -7.8 | 7.6 | 13,453 | 1.1 | 8.2 | 6.8 | 12 |
| Cheese | tonnes | Sept. 93 | 2,536 | 10.3 | -22.3 | 22,233 | 77.7 | 3.8 | 11.4 | 13 |
| Red meat | tonnes | Dec. 93 | 19,825 | -23.9 | -7.3 | 221,150 | -11.7 | -1.5 | 9.0 | 14 |
| Mineral exploration expenditure (other than for petroleum) | | | | | | | | | | |
| | \$m | Jun. qtr 93 | 6.1 | 60.5 | 24.5 | 173.3 | 40.9 | 7.6 | 3.5 | 15 |

| Indicator | | Reference period | SOUTH AUSTRALIA | | | AUSTRALIA | | | SA as a % of Australia | Source index |
|---|------------------------|------------------|-----------------|-------------------------------|--|-----------|----------------------------------|--|------------------------|--------------|
| | | | No. | % change | | No. | % change | | | |
| | | | | Over pre- ceding period | Over same period previous year | | Over pre- ceding period | Over same period previous year | | |
| Prices | | | | | | | | | | |
| CPI - All groups | 1989-90=100 | Dec. qtr 93 | 112.8 | 0.1 | 1.9 | 110.0 | 0.2 | 1.9 | .. | 16 |
| Price index of materials used in house building | 1985-86=100 | Dec. 93 | 152.2 | 0.1 | 12.1 | 151.9 | 0.2 | 5.4 | .. | 17 |
| Price index of materials used in building other than house building | 1989-90=100 | Dec. 93 | 107.7 | 0.2 | 3.2 | 107.2 | 0.0 | 1.4 | .. | 18 |
| Established house price index | 1989-90=100 | Sep. qtr 93 | 108.2 | -7.0 | 0.6 | 107.4 | 0.1 | 2.7 | .. | 19 |
| Price index of project homes | 1989-90=100 | Sep. qtr 93 | 109.6 | 3.4 | 4.0 | 105.4 | 1.8 | 2.8 | .. | 19 |
| Labour Force and Demography | | | | | | | | | | |
| Population (resident at end of qtr) | '000 | Jun. qtr 93 | 1,461.7 | 0.1 | 0.4 | 17,661.5 | 0.2 | 1.0 | 8.3 | 20 |
| Labour force | | | | | | | | | | |
| Original | '000 | Jan. 94 | 729.7 | 0.0 | 0.1 | 8,726.8 | -1.8 | 1.3 | 8.4 | 21 |
| Trend | '000 | Jan. 94 | 731.6 | 0.2 | 0.5 | 8,816.8 | 0.2 | 2.1 | 8.3 | 21 |
| Employed persons | | | | | | | | | | |
| Original | '000 | Jan. 94 | 640.7 | -2.7 | 0.7 | 7,738.9 | -2.5 | 1.9 | 8.3 | 21 |
| Trend | '000 | Jan. 94 | 648.4 | 0.1 | 0.8 | 7,867.8 | 0.3 | 2.4 | 8.2 | 21 |
| Participation rate | | | | | | | | | | |
| Original (a) | % | Jan. 94 | 62.1 | -0.8 | -0.1 | 62.5 | -1.2 | 0.1 | .. | 21 |
| Trend (a) | % | Jan. 94 | 62.2 | 0.1 | 0.0 | 63.2 | 0.1 | 0.6 | .. | 21 |
| Unemployment rate | | | | | | | | | | |
| Original (a) | % | Jan. 94 | 12.2 | 1.2 | -0.5 | 11.3 | 0.6 | -0.5 | .. | 21 |
| Trend (a) | % | Jan. 94 | 11.4 | 0.2 | -0.3 | 10.8 | 0.0 | -0.3 | .. | 21 |
| Job vacancies | '000 | Aug qtr. 93 | 1.8 | 28.6 | 28.6 | 39.0 | 29.1 | 39.3 | 4.6 | 22 |
| Average weekly overtime per employee | hours | Nov. qtr 93 | 1.1 | 13.5 | 11.2 | 1.3 | 13.0 | 8.3 | .. | 22 |
| Industrial disputes | '000 working days lost | Oct. 93 | 3.1 | -11.7 | 2404.1 | 79.3 | -1.9 | 309.8 | 3.9 | 23 |
| Short-term overseas visitors arrivals | No. | Oct. 93 | 5,554 | -6.4 | 12.2 | 267,215 | 19.3 | 16.5 | 2.1 | 24 |
| Short-term resident departures | No. | Oct. 93 | 8,167 | -34.3 | -18.7 | 176,937 | -22.7 | 2.2 | 4.6 | 25 |
| Incomes | | | | | | | | | | |
| Average weekly earnings (full-time adults; ordinary time) | \$ | Aug. qtr 93 | 603.3 | 2.4 | 3.6 | 602.4 | 0.8 | 2.8 | .. | 25 |
| Award rates of pay (full-time adults, weekly) | June 1985=100 | Dec. 93 | 142.9 | 0.5 | 1.1 | 140.5 | 0.3 | 0.9 | .. | 26 |
| Financial markets | | | | | | | | | | |
| Secured housing finance | \$m | Dec. 93 | 305.5 | 13.9 | 37.8 | 4,218.6 | 3.7 | 41.3 | 7.2 | 27 |
| Finance commitments | | | | | | | | | | |
| Personal | \$m | Dec. 93 | 161.0 | 9.7 | 21.0 | 2,171.3 | 11.3 | 33.6 | 7.4 | 28 |
| Commercial | \$m | Dec. 93 | 392.5 | -14.1 | 4.7 | 8,355.0 | -1.2 | 2.0 | 4.7 | 29 |
| Lease | \$m | Dec. 93 | 20.7 | -22.4 | -23.6 | 5,523.6 | 20.3 | 11.3 | 0.4 | 30 |
| Interest rates | | | | | | | | | | |
| Banks new housing loans (a) | % | Jan. 94 | .. | .. | .. | 8.75 | 0.0 | -1.3 | .. | 31 |
| Small overdraft rate (a) | | | | | | | | | | |
| Minimum | % | Jan. 94 | .. | .. | .. | 9.20 | 0.0 | -1.0 | .. | 31 |
| Maximum | % | Jan. 94 | .. | .. | .. | 9.50 | 0.0 | -1.0 | .. | 31 |

(a) Change is shown in terms of percentage points.

FOCUS

Retailing in South Australia

Introduction

The information in this article has been obtained from the 1991-92 Retail and Services Census conducted by the Australian Bureau of Statistics (ABS).

The results from this Census have recently become available. The main details for South Australia are discussed in the following paragraphs.

Shopfront Retailing

At 30 June 1992 there were 14,251 shopfront retailing locations in South Australia. In 1991-92 these locations had turnover of \$7,342 million, floorspace of 2.9 million square metres and employed 82,362 persons. The turnover represented \$5,057 per head of the State's population which was 8% lower than the Australian average of \$5,463 per head.

The turnover also represented \$89,146 per person employed compared with the national average of \$90,843. The 82,362 persons employed constituted 13% of South Australia's total employment.

Shopfront Retailing - Industry Analysis

Retail locations have been classified in accordance with the recently introduced Australian and New Zealand Industrial Classification (ANZSIC).

SHOPFRONT RETAILING, SUMMARY STATISTICS BY INDUSTRY GROUPS, 1991-92

| Industry Group | Locations at | Persons | Turnover |
|--|---------------|---------------|--------------|
| | June 30 | Employed | |
| | No. | No. | \$million |
| Supermarket and Grocery Stores | 694 | 14,196 | 2,084 |
| Specialised Food Retailing | 3,984 | 18,911 | 1,181 |
| Department Stores | 34 | 7,973 | 1,010 |
| Clothing and Soft Good Retailing | 1,560 | 6,054 | 556 |
| Furniture, Houseware & Appliance Retailing | 1,136 | 6,146 | 886 |
| Recreational Good Retailing | 976 | 3,951 | 391 |
| Other Personal & Household Good Retailing | 2418 | 8591 | 691 |
| Household Equipment Repair Services | 239 | 608 | 28 |
| Selected Personal Services | 3,210 | 15,932 | 514 |
| Total Shopfront Retailing | 14,251 | 82,362 | 7,342 |

For the Retail Census, shopfront retailing was divided into nine industry groups. Eight of the groups are standard industry groups as defined in ANZSIC while the ninth is a grouping of selected personal services industries.

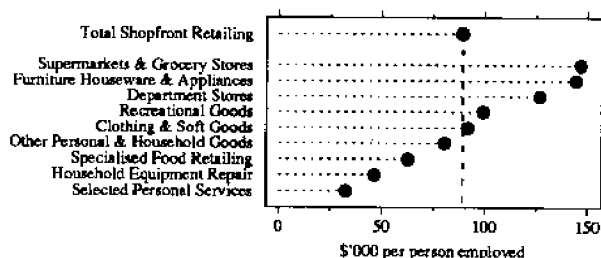
Motor Vehicle Retailing and Services

At 30 June 1992 there were 3,368 locations engaged in motor vehicle retailing and services. In 1991-92 the turnover from these locations totalled \$3,400 million and 18,178 people were employed.

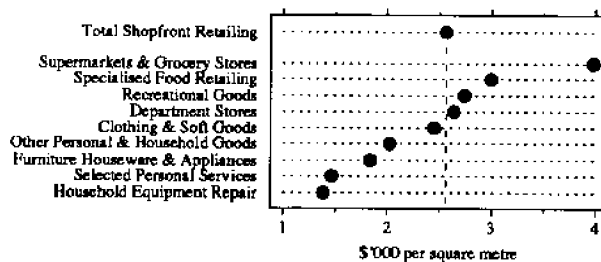
Shopfront Retailing - Performance Measures

Two useful performance measures for retailing are the ratios between turnover and employment, and turnover and floorspace. The following graphs provide information for these two performance measures by industry group.

SHOPFRONT RETAILING: TURNOVER PER PERSON EMPLOYED BY INDUSTRY GROUP, SOUTH AUSTRALIA, 1991-92



SHOPFRONT RETAILING: TURNOVER PER SQUARE METRE OF FLOORSPACE, BY INDUSTRY GROUP SOUTH AUSTRALIA, 1991-92

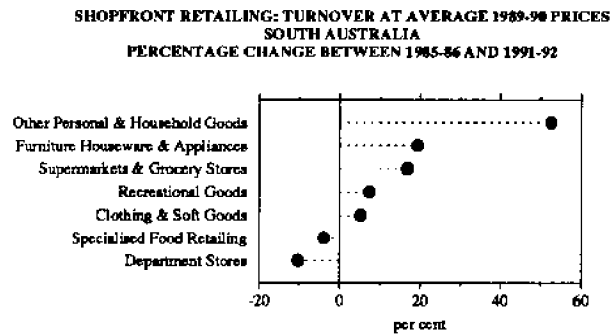


The graphs indicate that supermarket and grocery stores returned the best ratios for both measures. The selected personal services group had the lowest turnover per

person employed as well as the second lowest turnover per square metre of floorspace.

Comparisons with 1985-86 Retail Census

The following graph shows percentage changes in turnover for industry groups between 1985-86 and 1991-92 at average 1989-90 prices for South Australia.



Regional Data

Retail activity in South Australia is concentrated in the Adelaide Statistical Division (ASD) which recorded 79% of South Australia's shopfront retailing turnover during 1991-92. Outside the ASD the statistical local areas with the highest shopfront retailing turnover were Mount Gambier (C), \$172 million; Whyalla (C), \$126 million; and Port Pirie (C), \$90 million.

The following table sets out the main aggregates for Statistical Divisions in South Australia.

SHOPFRONT RETAILING, STATISTICAL DIVISIONS SOUTH AUSTRALIA, 1991-92

| Statistical Division | Locations at June 30 No. | Persons Employed No. | Turnover \$ million |
|------------------------|-----------------------------|-------------------------|------------------------|
| Adelaide | 10,107 | 63,717 | 5,805 |
| Outer Adelaide | 967 | 3,935 | 306 |
| Yorke and Lower North | 548 | 2,017 | 158 |
| Murray Lands | 683 | 3,079 | 255 |
| South East | 714 | 3,556 | 293 |
| Eyre | 380 | 1,773 | 154 |
| Northern | 852 | 4,285 | 372 |
| South Australia | 14,251 | 82,362 | 7,342 |

The Adelaide Statistical Division had the highest turnover per head at \$5,348. Of the other divisions, those closer to Adelaide had the lower turnovers with Outer Adelaide, \$3,168; Yorke and Lower North, \$3,617 and Murray Lands, \$3,765, while those more distant had higher turnovers with Northern, \$4,201; Eyre, \$4,646; and South East, \$4,679.

State Comparisons

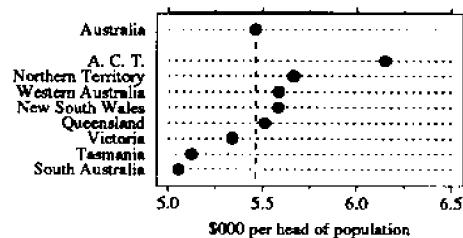
The following table provides details for each State and Territory.

SHOPFRONT RETAILING, STATES AND TERRITORIES, 1991-92

| State | Locations at June 30 No. | Persons Employed No. | Turnover \$million |
|------------------------------|-----------------------------|-------------------------|-----------------------|
| New South Wales | 58,956 | 354,406 | 33,116 |
| Victoria | 44,882 | 266,346 | 23,678 |
| Queensland | 29,649 | 188,331 | 16,518 |
| South Australia | 14,251 | 82,362 | 7,342 |
| Western Australia | 15,729 | 100,178 | 9,207 |
| Tasmania | 4,839 | 26,350 | 2,401 |
| Northern Territory | 1,294 | 9,121 | 944 |
| Australian Capital Territory | 2,339 | 18,670 | 1,793 |
| Australia | 171,942 | 1,045,772 | 95,001 |

The following graph provides a comparison for the performance measure, turnover per head of population, for each State and Territory.

SHOPFRONT RETAILING: TURNOVER PER HEAD OF POPULATION STATES AND TERRITORIES, 1991-92



South Australia had the lowest turnover per head of population (\$5,057). This was 8% below the national average.

Further Reference

The information in this article has been extracted from the ABS publication, *Retailing in South Australia, 1991-92* (8623.4) which is available from ABS Bookshops in all capital cities. In particular more detailed small area data can be obtained from this source.

TIME SERIES

MERCHANDISE EXPORTS BY COMMODITY GROUP Final Production In SA

(\$ '000)

| Period | Wheat and mueslin unmilled | Barley unmilled | Other cereals and cereal preparations | Meat and meat preparations | Fruit and Vegetables | Wine | Fish and crustaceans | Wool and sheepskins | Machinery |
|-----------|----------------------------------|--------------------|--|----------------------------------|-------------------------|---------|-------------------------|------------------------|-----------|
| ANNUAL | | | | | | | | | |
| 1989-90 | 414,442 | 243,151 | 66,777 | 244,374 | 75,897 | 73,484 | 111,760 | 285,650 | 111,944 |
| 1990-91 | 333,799 | 205,379 | 48,021 | 234,299 | 81,748 | 123,567 | 122,604 | 257,576 | 152,940 |
| 1991-92 | 345,964 | 168,565 | 51,053 | 270,237 | 107,997 | 165,914 | 147,532 | 351,096 | 176,536 |
| 1992-93 | 325,231 | 194,726 | 53,418 | 282,165 | 102,247 | 192,255 | 154,593 | 318,791 | 211,426 |
| MONTHLY | | | | | | | | | |
| 1992-93 - | | | | | | | | | |
| October | 35,803 | 17,993 | 4,113 | 25,762 | 9,408 | 14,996 | 15,188 | 43,755 | 16,979 |
| November | 49,012 | 21,783 | 2,341 | 30,156 | 6,710 | 11,405 | 13,132 | 42,487 | 18,892 |
| December | 29,950 | 14,712 | 1,065 | 30,185 | 4,741 | 7,837 | 11,101 | 40,069 | 21,095 |
| January | 6,463 | 32,237 | 8,341 | 19,261 | 7,273 | 13,301 | 13,000 | 22,627 | 9,279 |
| February | 19,248 | 10,251 | 6,357 | 21,698 | 12,251 | 11,263 | 14,207 | 25,323 | 18,345 |
| March | 19,145 | 9,762 | 4,741 | 26,334 | 5,916 | 18,298 | 17,361 | 24,292 | 15,005 |
| April | 39,075 | 12,651 | 4,040 | 23,666 | 11,541 | 15,214 | 13,657 | 24,292 | 18,345 |
| May | 39,054 | 11,141 | 4,896 | 23,966 | 4,291 | 22,787 | 12,711 | 16,599 | 21,166 |
| June | 24,060 | 5,099 | 7,509 | 28,313 | 11,633 | 23,697 | 13,884 | 20,540 | 21,647 |
| 1993-94 - | | | | | | | | | |
| July | 20,193 | 17 | 1,226 | 22,550 | 10,246 | 25,558 | 13,817 | 13,192 | 21,025 |
| August | 28,561 | 0 | 1,239 | 16,120 | 13,221 | 21,738 | 8,971 | 11,390 | 15,861 |
| September | 40,081 | 5 | 1,566 | 22,705 | 5,537 | 31,685 | 15,084 | 16,385 | 20,298 |
| October | 4,000 | 0 | 1,778 | 31,567 | 8,774 | 25,962 | 21,169 | 30,833 | 24,188 |
| November | 30,213 | 0 | 4,406 | 28,654 | 6,007 | 14,504 | 20,913 | 29,221 | 16,495 |
| December | 33,070 | 19 | 1,487 | 30,035 | 9,553 | 14,590 | 16,333 | 32,719 | 18,824 |

MERCHANDISE EXPORTS BY COMMODITY GROUP Final Production In SA

(\$ '000)

| Period | Iron and steel | Copper | Lead | Zinc | Manufact- ures of metals, nec | Petroleum and petroleum products | Road vehicles, parts and accessories | Chemicals and related products, nes | Total |
|-----------|-------------------|--------|--------|-------|-------------------------------------|---|---|---|---------|
| ANNUAL | | | | | | | | | |
| 1989-90 | 106784 | 117507 | 91168 | 10592 | 19929 | 188105 | 161704 | 32581 | 2828091 |
| 1990-91 | 101946 | 136500 | 110332 | 23463 | 37266 | 291507 | 117218 | 61547 | 3007118 |
| 1991-92 | 108841 | 137364 | 144378 | 34656 | 46675 | 341456 | 137091 | 62254 | 3431118 |
| 1992-93 | 70700 | 153744 | 143919 | 45728 | 54085 | 372347 | 338359 | 50591 | 3760356 |
| MONTHLY | | | | | | | | | |
| 1992-93 - | | | | | | | | | |
| October | 1315 | 18411 | 13901 | 5380 | 4940 | 39535 | 11659 | 5322 | 330353 |
| November | 8281 | 1172 | 20981 | 8408 | 3102 | 45870 | 40095 | 5575 | 400057 |
| December | 1970 | 19902 | 12098 | 2754 | 8407 | 40669 | 39653 | 5213 | 342439 |
| January | 12922 | 2562 | 13331 | 3560 | 3882 | 21212 | 7450 | 6567 | 246432 |
| February | 9575 | 21708 | 11982 | 3224 | 4037 | 4924 | 24596 | 1898 | 270255 |
| March | 2362 | 18493 | 9786 | 2472 | 5427 | 35354 | 27430 | 3956 | 345318 |
| April | 6755 | 2074 | 8652 | 2497 | 3048 | 20596 | 31776 | 6106 | 287371 |
| May | 8189 | 14736 | 11237 | 5374 | 2982 | 44762 | 39284 | 4237 | 336720 |
| June | 9114 | 14257 | 8162 | 5153 | 6106 | 42498 | 72277 | 5916 | 373857 |
| 1993-94 - | | | | | | | | | |
| July | 1115 | 1521 | 11478 | 3198 | 3522 | 10842 | 45380 | 5374 | 266513 |
| August | 9764 | 14609 | 6649 | 2838 | 2283 | 21313 | 24715 | 5471 | 303914 |
| September | 10153 | 15079 | 8429 | 1880 | 3203 | 32406 | 29068 | 4787 | 319649 |
| October | 14510 | 2553 | 10876 | 1532 | 3204 | 28716 | 36065 | 6409 | 325140 |
| November | 10601 | 9016 | 7402 | 1412 | 3178 | 12889 | 50317 | 6031 | 323611 |
| December | 7529 | 12577 | 9307 | 461 | 3066 | 27431 | 45511 | 6031 | 351677 |

MERCHANDISE EXPORTS BY COUNTRY
Final Production in SA

| | (\$ '000) | | | | | | | | | |
|----------------|-----------|---------------|-------------|----------------|---------|-----------|-----------|---------|-----------|---------|
| | Japan | United States | New Zealand | United Kingdom | Taiwan | Indonesia | Hong Kong | China | Singapore | Germany |
| ANNUAL | | | | | | | | | | |
| 1988-89 | 308,745 | 180,732 | 228,651 | 103,609 | 71,942 | 18,635 | 55,311 | 46,401 | 99,193 | 59,555 |
| 1989-90 | 286,987 | 221,001 | 287,660 | 100,474 | 93,185 | 66,122 | 47,421 | 74,539 | 78,926 | 101,221 |
| 1990-91 | 365,666 | 258,161 | 176,606 | 152,029 | 98,342 | 44,372 | 74,912 | 122,748 | 207,812 | 90,488 |
| 1991-92 | 535,358 | 275,460 | 201,021 | 191,597 | 136,017 | 95,001 | 101,022 | 116,787 | 135,529 | 94,179 |
| 1992-93 | 588,599 | 326,033 | 255,685 | 218,206 | 178,760 | 164,290 | 155,250 | 150,941 | 115,365 | 114,843 |
| MONTHLY | | | | | | | | | | |
| 1992-93 - | | | | | | | | | | |
| October | 53,070 | 21,272 | 20,130 | 18,659 | 13,315 | 3,404 | 11,951 | 20,494 | 25,324 | 11,338 |
| November | 54,430 | 43,317 | 26,240 | 10,318 | 19,050 | 25,908 | 11,684 | 22,676 | 13,543 | 3,442 |
| December | 54,886 | 32,259 | 34,114 | 16,886 | 15,274 | 22,332 | 12,083 | 16,277 | 5,667 | 8,240 |
| January | 37,245 | 14,986 | 9,067 | 13,676 | 25,187 | 7,569 | 12,169 | 6,675 | 6,891 | 2,505 |
| February | 37,510 | 30,346 | 13,376 | 14,706 | 21,695 | 4,891 | 13,776 | 6,664 | 8,572 | 6,569 |
| March | 51,391 | 31,401 | 13,906 | 24,489 | 9,734 | 22,798 | 19,062 | 9,443 | 8,118 | 10,796 |
| April | 39,051 | 27,161 | 28,326 | 9,860 | 17,241 | 4,392 | 13,567 | 11,844 | 5,857 | 4,068 |
| May | 55,260 | 29,002 | 18,647 | 25,567 | 7,226 | 32,711 | 18,611 | 7,060 | 6,590 | 19,468 |
| June | 78,414 | 43,167 | 23,502 | 29,220 | 21,841 | 9,938 | 12,432 | 6,840 | 9,749 | 23,803 |
| 1993-94 - | | | | | | | | | | |
| July | 42,870 | 27,158 | 25,651 | 17,409 | 9,947 | 7,075 | 7,765 | 5,926 | 10,350 | 13,690 |
| August | 45,941 | 24,459 | 17,521 | 23,499 | 14,287 | 2,086 | 8,870 | 4,390 | 9,961 | 9,816 |
| September | 54,655 | 24,202 | 25,442 | 27,036 | 14,181 | 25,502 | 7,585 | 8,596 | 4,745 | 12,828 |
| October | 73,510 | 28,494 | 25,855 | 20,584 | 11,569 | 17,695 | 9,836 | 15,584 | 19,045 | 5,705 |
| November | 44,376 | 35,118 | 37,418 | 7,604 | 11,955 | 2,024 | 13,017 | 10,780 | 9,843 | 10,619 |
| December | 51,201 | 44,136 | 24,358 | 13,679 | 9,917 | 18,227 | 13,301 | 9,586 | 10,556 | 8,020 |

MERCHANDISE IMPORTS BY COMMODITY GROUP
Import Documents Lodged In SA

| Period | (\$ '000) | | | | | | | | |
|----------------|-----------------------------|----------------------------------|-----------|----------|-------------------------------|-----------|--------------------------------------|--------------------------|-----------|
| | Food, beverages and tobacco | Petroleum and petroleum products | Chemicals | Textiles | Metals and metal manufactures | Machinery | Road vehicles, parts and accessories | Other manufactured goods | Total |
| ANNUAL | | | | | | | | | |
| 1989-90 | 71,796 | 203,654 | 167,154 | 49,249 | 147,969 | 462,885 | 414,800 | 399,437 | 2,050,024 |
| 1990-91 | 78,926 | 425,262 | 140,894 | 49,067 | 135,772 | 515,226 | 372,603 | 366,304 | 2,193,851 |
| 1991-92 | 82,095 | 362,777 | 153,574 | 62,884 | 151,165 | 523,848 | 435,121 | 513,012 | 2,396,954 |
| 1992-93 | 91,756 | 570,334 | 186,001 | 57,434 | 255,924 | 609,212 | 661,714 | 521,723 | 3,068,122 |
| MONTHLY | | | | | | | | | |
| 1992-93 - | | | | | | | | | |
| October | 9,045 | 22,210 | 19,854 | 5,251 | 11,880 | 49,955 | 59,896 | 44,182 | 230,245 |
| November | 8,070 | 77,452 | 10,031 | 4,531 | 12,242 | 50,226 | 57,858 | 40,252 | 268,084 |
| December | 7,411 | 18,423 | 13,782 | 3,305 | 65,104 | 50,752 | 56,850 | 41,577 | 269,256 |
| January | 5,893 | 78,501 | 22,210 | 4,434 | 13,004 | 44,624 | 41,056 | 55,525 | 271,096 |
| February | 7,188 | 56,090 | 21,487 | 3,892 | 19,629 | 60,556 | 51,769 | 33,840 | 262,251 |
| March | 12,411 | 28,348 | 13,724 | 6,309 | 10,743 | 70,440 | 65,595 | 46,223 | 263,888 |
| April | 6,441 | 33,453 | 15,499 | 3,877 | 19,147 | 43,383 | 52,720 | 40,026 | 223,721 |
| May | 7,185 | 53,571 | 17,176 | 4,785 | 8,300 | 52,850 | 45,851 | 40,643 | 239,272 |
| June | 6,560 | 37,704 | 15,518 | 5,332 | 14,046 | 53,557 | 72,404 | 39,499 | 258,025 |
| 1993-94 - | | | | | | | | | |
| July | 7,623 | 41,401 | 14,236 | 6,259 | 14,158 | 58,535 | 60,778 | 46,272 | 264,176 |
| August | 8,293 | 52,941 | 12,906 | 5,596 | 11,279 | 46,107 | 61,331 | 40,730 | 246,843 |
| September | 8,475 | 56,549 | 18,284 | 5,581 | 19,334 | 57,205 | 52,346 | 46,360 | 280,590 |
| October | 7,203 | 107 | 12,417 | 4,342 | 14,389 | 61,047 | 57,227 | 40,661 | 207,623 |
| November | 11,333 | 45,041 | 13,082 | 5,657 | 11,426 | 49,996 | 73,123 | 42,218 | 263,340 |
| December | 7,643 | 37,281 | 13,082 | 4,205 | 13,333 | 49,996 | 38,057 | 36,102 | 214,716 |

TURNOVER OF RETAIL ESTABLISHMENTS BY INDUSTRY South Australia

| Period | Grocers, confectioners and tobacconists | Butchers | Other food stores | Hotels, liquor stores and licensed clubs | Cafes and restaurants | Clothing and fabric stores | Department and general stores | Footwear stores |
|--|---|----------|-------------------------|---|--------------------------|----------------------------------|-------------------------------------|--------------------|
| ANNUAL (\$ million) | | | | | | | | |
| 1983-84 | 1,396.9 | 148.7 | 297.4 | 506.6 | n.a. | 330.9 | 736.2 | 49.7 |
| 1984-85 | 1,462.3 | 145.1 | 308.7 | 573.1 | n.a. | 338.3 | 788.7 | 54.8 |
| 1985-86 | 1,615.9 | 155.6 | 368.8 | 659.5 | n.a. | 358.7 | 882.7 | 59.9 |
| 1986-87 | 1,732.1 | 141.7 | 398.6 | 680.8 | n.a. | 351.1 | 924.8 | 62.1 |
| 1987-88 | 1,801.2 | 121.1 | 443.0 | 745.7 | n.a. | 362.1 | 952.9 | 77.0 |
| 1988-89 | 1,896.9 | 155.7 | 446.1 | 770.5 | 295.6 | 406.7 | 963.6 | 82.2 |
| 1989-90 | 1,985.8 | 169.7 | 480.1 | 775.0 | 298.9 | 453.3 | 1,032.2 | 90.9 |
| 1990-91 | 2,191.2 | 182.0 | 539.9 | 768.4 | 313.4 | 461.2 | 1,060.0 | 101.8 |
| 1991-92 | 2,300.8 | 135.9 | 603.1 | 778.5 | 326.4 | 384.6 | 1,078.2 | 101.0 |
| 1992-93 | 2,330.1 | 117.9 | 476.3 | 738.8 | 318.9 | 355.2 | 1,092.1 | 101.7 |
| PERCENTAGE CHANGE FROM PREVIOUS YEAR | | | | | | | | |
| 1984-85 | 4.7 | -2.4 | 3.8 | 13.1 | n.a. | 2.2 | 7.1 | 10.9 |
| 1985-86 | 10.5 | 7.2 | 19.5 | 15.1 | n.a. | 6.0 | 11.9 | 9.3 |
| 1986-87 | 7.2 | -8.9 | 8.1 | 3.2 | n.a. | -2.1 | 4.8 | 3.7 |
| 1987-88 | 4.0 | -14.5 | 11.1 | 9.5 | n.a. | 3.1 | 3.0 | 24.0 |
| 1988-89 | 5.3 | 28.6 | 0.7 | 3.3 | n.a. | 12.3 | 1.1 | 6.8 |
| 1989-90 | 4.7 | 9.0 | 7.6 | 0.6 | 1.1 | 11.5 | 7.1 | 10.6 |
| 1990-91 | 10.3 | 7.2 | 12.5 | -0.9 | 4.9 | 1.7 | 2.7 | 12.0 |
| 1991-92 | 5.0 | -25.3 | 11.7 | 1.3 | 4.1 | -16.6 | 1.7 | -0.8 |
| 1992-93 | 1.3 | -13.2 | -21.0 | -5.1 | -2.3 | -7.6 | 1.3 | 0.7 |
| MONTHLY, ORIGINAL (\$ million) | | | | | | | | |
| 1992-93 - | | | | | | | | |
| October | 195.4 | 10.7 | 41.0 | 62.2 | 27.4 | 31.4 | 96.2 | 9.5 |
| November | 182.9 | 9.3 | 40.9 | 62.1 | 28.5 | 29.8 | 98.9 | 8.1 |
| December | 224.9 | 12.8 | 42.1 | 84.1 | 29.2 | 39.3 | 162.0 | 10.8 |
| January | 193.6 | 10.6 | 37.9 | 63.7 | 28.3 | 26.7 | 78.7 | 9.4 |
| February | 177.4 | 9.2 | 38.0 | 56.4 | 24.7 | 22.8 | 68.9 | 6.4 |
| March | 203.2 | 9.8 | 41.7 | 61.4 | 27.8 | 26.9 | 77.0 | 8.4 |
| April | 206.0 | 9.6 | 38.9 | 63.9 | 25.7 | 26.8 | 86.0 | 8.6 |
| May | 200.4 | 8.5 | 37.3 | 57.7 | 23.9 | 30.1 | 92.5 | 9.0 |
| June | 195.5 | 10.3 | 36.5 | 59.5 | 24.1 | 31.3 | 88.4 | 8.2 |
| 1993-94 - | | | | | | | | |
| July | 210.3 | 11.0 | 38.0 | 64.6 | 26.0 | 30.6 | 84.5 | 8.0 |
| August | 196.8 | 10.6 | 35.4 | 61.1 | 23.5 | 28.0 | 78.4 | 6.9 |
| September | 203.8 | 10.7 | 35.4 | 65.9 | 21.1 | 31.0 | 85.4 | 7.9 |
| October | 210.2 | 9.1 | 36.2 | 74.2 | 24.8 | 31.8 | 88.9 | 8.9 |
| November | 209.8 | 8.2 | 39.5 | 74.7 | 26.8 | 33.6 | 101.1 | 8.6 |
| December | 251.5 | 8.4 | 45.6 | 103.4 | 27.6 | 44.9 | 166.1 | 12.1 |
| MONTHLY, TREND ESTIMATES (\$ million) | | | | | | | | |
| 1992-93 - | | | | | | | | |
| October | 188.3 | 9.8 | 39.0 | 60.8 | n.a. | 30.8 | 91.2 | 8.6 |
| November | 190.0 | 10.0 | 38.5 | 60.7 | | 30.4 | 91.6 | 8.8 |
| December | 192.4 | 10.2 | 38.4 | 60.6 | | 29.8 | 91.4 | 8.9 |
| January | 194.9 | 10.2 | 38.7 | 60.4 | | 29.0 | 91.2 | 8.9 |
| February | 197.3 | 10.1 | 39.3 | 60.5 | | 28.3 | 91.2 | 8.8 |
| March | 199.5 | 10.1 | 39.8 | 61.3 | | 27.9 | 91.6 | 8.6 |
| April | 201.2 | 10.2 | 40.0 | 62.6 | | 27.8 | 91.8 | 8.3 |
| May | 202.6 | 10.3 | 39.8 | 64.3 | | 28.2 | 91.8 | 8.1 |
| June | 203.7 | 10.5 | 39.0 | 66.1 | | 29.0 | 91.4 | 7.9 |
| 1993-94 - | | | | | | | | |
| July | 205.0 | 10.5 | 38.0 | 67.9 | | 30.0 | 91.1 | 7.9 |
| August | 206.5 | 10.3 | 37.2 | 69.4 | | 31.0 | 91.0 | 8.1 |
| September | 208.2 | 9.9 | 36.6 | 70.8 | | 31.9 | 90.8 | 8.3 |
| October | 210.1 | 9.2 | 36.5 | 72.1 | | 32.6 | 90.7 | 8.6 |
| November | 211.9 | 8.4 | 36.7 | 73.5 | | 33.2 | 90.5 | 8.9 |
| December | 213.3 | 7.6 | 37.0 | 74.5 | | 33.7 | 90.4 | 9.2 |
| PERCENTAGE CHANGE FROM PREVIOUS MONTH, TREND ESTIMATES | | | | | | | | |
| 1992-93 - | | | | | | | | |
| December | 1.3 | 2.0 | -0.3 | -0.2 | n.a. | -2.0 | -0.2 | 1.1 |
| January | 1.3 | 0.0 | 0.8 | -0.3 | | -2.7 | -0.2 | 0.0 |
| February | 1.2 | -1.0 | 1.6 | 0.2 | | -2.4 | 0.0 | -1.1 |
| March | 1.1 | 0.0 | 1.3 | 1.3 | | -1.4 | 0.4 | -2.3 |
| April | 0.9 | 1.0 | 0.5 | 2.1 | | -0.4 | 0.2 | -3.5 |
| May | 0.7 | 1.0 | -0.5 | 2.7 | | 1.4 | 0.0 | -2.4 |
| June | 0.5 | 1.9 | -2.0 | 2.8 | | 2.8 | -0.4 | -2.5 |
| 1993-94 - | | | | | | | | |
| July | 0.6 | 0.0 | -2.6 | 2.7 | | 3.4 | -0.3 | 0.0 |
| August | 0.7 | -1.9 | -2.1 | 2.2 | | 3.3 | -0.1 | 2.5 |
| September | 0.8 | -3.9 | -1.6 | 2.0 | | 2.9 | -0.2 | 2.5 |
| October | 0.9 | -7.1 | -0.3 | 1.8 | | 2.2 | -0.1 | 3.6 |
| November | 0.9 | -8.7 | 0.5 | 1.9 | | 1.8 | -0.2 | 3.5 |
| December | 0.7 | -9.5 | 0.8 | 1.4 | | 1.5 | -0.1 | 3.4 |

TURNOVER OF RETAIL ESTABLISHMENTS BY INDUSTRY
South Australia – continued

| <i>Period</i> | <i>Domestic hardware stores and jewellers</i> | <i>Electrical goods stores</i> | <i>Furniture stores</i> | <i>Floor covering stores</i> | <i>Pharmacies</i> | <i>Newsagents</i> | <i>Other stores</i> | <i>Total</i> |
|---|---|--------------------------------|-------------------------|------------------------------|-------------------|-------------------|---------------------|--------------|
| ANNUAL (\$ million) | | | | | | | | |
| 1983-84 | 75.0 | 358.6 | 160.2 | 56.9 | 133.5 | 116.2 | n.a. | 4,738.4 |
| 1984-85 | 88.2 | 373.7 | 180.8 | 56.1 | 142.6 | 115.6 | n.a. | 5,015.5 |
| 1985-86 | 88.7 | 383.1 | 204.3 | 45.7 | 145.7 | 135.3 | n.a. | 5,529.2 |
| 1986-87 | 88.5 | 362.4 | 179.0 | 51.8 | 166.8 | 130.0 | n.a. | 5,735.4 |
| 1987-88 | 115.1 | 419.7 | 153.7 | 50.2 | 181.3 | 129.3 | n.a. | 6,056.2 |
| 1988-89 | 147.2 | 432.1 | 176.4 | 54.5 | 206.8 | 143.8 | 280.1 | 6,458.4 |
| 1989-90 | 182.7 | 419.9 | 181.1 | 66.6 | 238.7 | 157.6 | 297.2 | 6,829.4 |
| 1990-91 | 173.2 | 432.6 | 173.2 | 63.4 | 276.4 | 166.8 | 344.4 | 7,247.4 |
| 1991-92 | 207.1 | 419.9 | 174.3 | 49.8 | 298.6 | 143.8 | 357.4 | 7,358.7 |
| 1992-93 | 259.3 | 372.9 | 199.3 | 46.1 | 366.7 | 148.7 | 357.6 | 7,281.1 |
| PERCENTAGE CHANGE FROM PREVIOUS YEAR | | | | | | | | |
| 1984-85 | 17.6 | 4.2 | 12.9 | -1.4 | 6.8 | -0.5 | n.a. | 5.8 |
| 1985-86 | 0.6 | 2.5 | 13.0 | -18.5 | 2.2 | 17.0 | n.a. | 10.2 |
| 1986-87 | -0.2 | -5.4 | -12.4 | 13.3 | 14.5 | -3.9 | n.a. | 3.7 |
| 1987-88 | 30.1 | 15.8 | -14.1 | -3.1 | 8.7 | -0.5 | n.a. | 5.6 |
| 1988-89 | 27.9 | 3.0 | 14.8 | 8.6 | 14.1 | 11.2 | n.a. | 6.6 |
| 1989-90 | 24.1 | -2.8 | 2.7 | 22.2 | 15.4 | 9.6 | 6.1 | 5.7 |
| 1990-91 | -5.2 | 3.0 | -4.4 | -4.8 | 15.8 | 5.8 | 15.9 | 6.1 |
| 1991-92 | 19.6 | -2.9 | 0.6 | -21.5 | 8.0 | -13.8 | 3.8 | 1.5 |
| 1992-93 | 25.2 | -11.2 | 14.3 | -7.4 | 22.8 | 3.4 | 0.1 | -1.1 |
| MONTHLY, ORIGINAL (\$ million) | | | | | | | | |
| <i>1992-93 –</i> | | | | | | | | |
| October | 22.5 | 29.1 | 17.6 | 4.1 | 31.3 | 10.2 | 31.8 | 620.3 |
| November | 25.2 | 30.6 | 16.4 | 4.2 | 31.6 | 10.3 | 28.4 | 607.3 |
| December | 37.6 | 42.1 | 18.1 | 3.4 | 38.7 | 17.1 | 43.3 | 805.5 |
| January | 21.4 | 28.5 | 16.4 | 2.7 | 28.9 | 10.8 | 30.9 | 586.4 |
| February | 18.2 | 28.6 | 13.7 | 3.1 | 23.5 | 9.9 | 26.7 | 527.4 |
| March | 19.9 | 31.2 | 17.2 | 3.4 | 28.1 | 14.9 | 28.9 | 599.7 |
| April | 18.7 | 27.6 | 16.1 | 3.1 | 30.3 | 12.7 | 31.1 | 605.2 |
| May | 17.4 | 30.1 | 16.6 | 3.5 | 32.1 | 13.3 | 27.3 | 599.7 |
| June | 17.4 | 32.9 | 16.3 | 4.9 | 31.8 | 14.2 | 26.1 | 597.1 |
| <i>1993-94 –</i> | | | | | | | | |
| July | 16.4 | 32.7 | 17.7 | 5.1 | 31.9 | 16.5 | 25.9 | 619.2 |
| August | 19.6 | 31.5 | 18.1 | 5.3 | 31.4 | 15.4 | 24.0 | 586.0 |
| September | 19.1 | 32.4 | 18.3 | 5.5 | 35.2 | 16.3 | 27.4 | 615.6 |
| October | 22.6 | 31.3 | 19.2 | 5.2 | 32.9 | 15.8 | 28.2 | 639.2 |
| November | 24.3 | 34.7 | 18.6 | 5.6 | 35.5 | 16.6 | 28.5 | 665.9 |
| December | 31.2 | 48.6 | 20.3 | 4.7 | 38.7 | 21.4 | 43.8 | 868.4 |
| MONTHLY, TREND ESTIMATES (\$ million) | | | | | | | | |
| <i>1992-93 –</i> | | | | | | | | |
| October | 21.9 | 31.4 | 16.6 | 3.9 | 30.3 | 11.6 | n.a. | 601.5 |
| November | 22.2 | 31.4 | 16.5 | 3.7 | 29.8 | 11.4 | | 602.8 |
| December | 22.3 | 31.2 | 16.4 | 3.5 | 29.3 | 11.4 | | 603.7 |
| January | 22.4 | 30.8 | 16.4 | 3.4 | 29.3 | 11.5 | | 604.7 |
| February | 22.2 | 30.5 | 16.5 | 3.3 | 29.7 | 11.9 | | 606.6 |
| March | 21.7 | 30.4 | 16.6 | 3.4 | 30.3 | 12.6 | | 609.4 |
| April | 21.1 | 30.4 | 16.7 | 3.6 | 31.1 | 13.3 | | 612.7 |
| May | 20.4 | 30.8 | 16.8 | 3.9 | 31.8 | 14.1 | | 616.4 |
| June | 20.0 | 31.4 | 17.0 | 4.3 | 32.3 | 15.0 | | 620.7 |
| <i>1993-94 –</i> | | | | | | | | |
| July | 20.1 | 32.3 | 17.4 | 4.7 | 32.7 | 15.8 | | 625.5 |
| August | 20.3 | 33.2 | 17.7 | 4.9 | 32.7 | 16.5 | | 630.3 |
| September | 20.4 | 34.0 | 18.1 | 5.1 | 32.6 | 16.9 | | 634.7 |
| October | 20.4 | 34.7 | 18.3 | 5.1 | 32.5 | 17.2 | | 638.6 |
| November | 20.1 | 35.2 | 18.4 | 5.1 | 32.2 | 17.2 | | 641.9 |
| December | 19.7 | 35.4 | 18.4 | 5.1 | 31.9 | 17.1 | | 644.4 |
| PERCENTAGE CHANGE FROM PREVIOUS MONTH, TREND ESTIMATES | | | | | | | | |
| <i>1992-93 –</i> | | | | | | | | |
| December | 0.5 | -0.6 | -0.6 | -5.4 | -1.7 | 0.0 | n.a. | 0.1 |
| January | 0.4 | -1.3 | 0.0 | -2.9 | 0.0 | 0.9 | | 0.2 |
| February | -0.9 | -1.0 | 0.6 | -2.9 | 1.4 | 3.5 | | 0.3 |
| March | -2.3 | -0.3 | 0.6 | 3.0 | 2.0 | 5.9 | | 0.5 |
| April | -2.8 | 0.0 | 0.6 | 5.9 | 2.6 | 5.6 | | 0.5 |
| May | -3.3 | 1.3 | 0.6 | 8.3 | 2.3 | 6.0 | | 0.6 |
| June | -2.0 | 1.9 | 1.2 | 10.3 | 1.6 | 6.4 | | 0.7 |
| <i>1993-94 –</i> | | | | | | | | |
| July | 0.5 | 2.9 | 2.4 | 9.3 | 1.2 | 5.3 | | 0.8 |
| August | 1.0 | 2.8 | 1.7 | 4.3 | 0.0 | 4.4 | | 0.8 |
| September | 0.5 | 2.4 | 2.3 | 4.1 | -0.3 | 2.4 | | 0.7 |
| October | 0.0 | 2.1 | 1.1 | 0.0 | -0.3 | 1.8 | | 0.6 |
| November | -1.5 | 1.4 | 0.5 | 0.0 | -0.9 | 0.0 | | 0.5 |
| December | -2.0 | 0.6 | 0.0 | 0.0 | -0.9 | -0.6 | | 0.4 |

NEW MOTOR VEHICLE REGISTRATIONS BY TYPE OF VEHICLE
South Australia

| Period | Original | | | Seasonally Adjusted | | | Trend Estimate | | |
|---------------|-------------------------|----------------|--------|-------------------------|----------------|-------|-------------------------|----------------|-------|
| | Cars and station wagons | Other vehicles | Total | Cars and station wagons | Other vehicles | Total | Cars and station wagons | Other vehicles | Total |
| ANNUAL | | | | | | | | | |
| 1982-83 | 39,554 | 9,193 | 48,747 | | | | | | |
| 1983-84 | 41,204 | 9,769 | 50,973 | | | | | | |
| 1984-85 | 45,809 | 11,795 | 57,604 | | | | | | |
| 1985-86 | 40,840 | 9,620 | 50,460 | | | | | | |
| 1986-87 | 29,788 | 6,430 | 36,218 | | | | | | |
| 1987-88 | 29,915 | 5,775 | 35,690 | | | | | | |
| 1988-89 | 31,920 | 6,816 | 38,736 | | | | | | |
| 1989-90 | 35,211 | 7,808 | 43,019 | | | | | | |
| 1990-91 | 34,753 | 6,619 | 41,372 | | | | | | |
| 1991-92 | 32,351 | 5,333 | 37,684 | | | | | | |
| 1992-93 | 32,894 | 5,577 | 38,471 | | | | | | |

PERCENTAGE CHANGE FROM PREVIOUS YEAR

| | | | | | | | | | |
|---------|-------|-------|-------|--|--|--|--|--|--|
| 1983-84 | 4.2 | 6.3 | 4.6 | | | | | | |
| 1984-85 | 11.2 | 20.7 | 13.0 | | | | | | |
| 1985-86 | -10.8 | -18.4 | -12.4 | | | | | | |
| 1986-87 | -27.1 | -33.2 | -28.2 | | | | | | |
| 1987-88 | 0.4 | -10.2 | -1.5 | | | | | | |
| 1988-89 | 6.7 | 18.0 | 8.5 | | | | | | |
| 1989-90 | 10.3 | 14.6 | 11.1 | | | | | | |
| 1990-91 | -1.3 | -15.2 | -3.8 | | | | | | |
| 1991-92 | -6.9 | -19.4 | -8.9 | | | | | | |
| 1992-93 | 1.7 | 4.6 | 2.1 | | | | | | |

MONTHLY

| | | | | | | | | | |
|------------------|-------|-----|-------|-------|-----|-------|-------|-----|-------|
| 1992-93 - | | | | | | | | | |
| October | 3,042 | 470 | 3,512 | 2,833 | 477 | 3,310 | 2,789 | 461 | 3,251 |
| November | 2,700 | 493 | 3,193 | 2,645 | 467 | 3,113 | 2,762 | 473 | 3,235 |
| December | 3,179 | 539 | 3,718 | 2,975 | 518 | 3,493 | 2,721 | 476 | 3,197 |
| January | 1,961 | 362 | 2,323 | 2,661 | 480 | 3,141 | 2,684 | 473 | 3,157 |
| February | 2,254 | 403 | 2,657 | 2,499 | 421 | 2,920 | 2,656 | 470 | 3,127 |
| March | 2,856 | 563 | 3,419 | 2,551 | 490 | 3,041 | 2,656 | 472 | 3,128 |
| April | 2,475 | 393 | 2,868 | 2,734 | 431 | 3,165 | 2,689 | 475 | 3,164 |
| May | 2,678 | 492 | 3,170 | 2,831 | 495 | 3,326 | 2,731 | 474 | 3,205 |
| June | 2,976 | 606 | 3,582 | 2,785 | 514 | 3,299 | 2,761 | 467 | 3,228 |
| 1993-94 - | | | | | | | | | |
| July | 2,703 | 484 | 3,187 | 2,676 | 487 | 3,164 | 2,763 | 456 | 3,219 |
| August | 3,156 | 393 | 3,549 | 2,934 | 414 | 3,347 | 2,729 | 444 | 3,173 |
| September | 2,805 | 336 | 3,141 | 2,574 | 333 | 2,907 | 2,688 | 436 | 3,124 |
| October | 2,602 | 466 | 3,068 | 2,527 | 482 | 3,009 | 2,654 | 434 | 3,088 |
| November | 2,951 | 539 | 3,490 | 2,723 | 492 | 3,214 | 2,629 | 435 | 3,064 |
| December | 2,725 | 447 | 3,172 | 2,623 | 423 | 3,046 | 2,614 | 439 | 3,053 |

PERCENTAGE CHANGE FROM PREVIOUS MONTH

| | | | | | | | | | |
|------------------|-------|-------|-------|-------|-------|-------|------|------|------|
| 1992-93 - | | | | | | | | | |
| November | -11.2 | 4.9 | -9.1 | -6.6 | -2.1 | -6.0 | -1.0 | 2.6 | -0.5 |
| December | 17.7 | 9.3 | 16.4 | 12.5 | 10.9 | 12.2 | -1.5 | 0.6 | -1.2 |
| January | -38.3 | -32.8 | -37.5 | -10.6 | -7.3 | -10.1 | -1.4 | -0.6 | -1.3 |
| February | 14.9 | 11.3 | 14.4 | -6.1 | -12.3 | -7.0 | -1.0 | -0.6 | -1.0 |
| March | 26.7 | 39.7 | 28.7 | 2.1 | 16.4 | 4.1 | 0.0 | 0.4 | 0.0 |
| April | -13.3 | -30.2 | -16.1 | 7.2 | 3.5 | -12.0 | 1.2 | 0.6 | 1.2 |
| May | 8.2 | 25.2 | 10.5 | 7.2 | 14.8 | 5.1 | 1.6 | -0.2 | 1.3 |
| June | 11.1 | 23.2 | 13.0 | -1.6 | 3.8 | -0.8 | 1.1 | -1.5 | 0.7 |
| 1993-94 - | | | | | | | | | |
| July | -9.2 | -20.1 | -11.0 | -3.9 | -5.3 | -4.1 | 0.1 | -2.4 | -0.3 |
| August | 16.8 | -18.8 | 11.4 | 9.6 | -15.0 | 5.8 | -1.2 | -2.6 | -1.4 |
| September | -11.1 | -14.5 | -11.5 | -12.3 | -19.6 | -13.1 | -1.5 | -1.8 | -1.5 |
| October | -7.2 | 38.7 | -2.3 | -1.8 | 44.7 | 3.5 | -1.3 | -0.5 | -1.2 |
| November | 13.4 | 15.7 | 13.8 | 7.8 | 2.1 | 6.8 | -0.9 | 0.2 | -0.8 |
| December | -7.7 | -17.1 | -9.1 | -3.7 | -14.0 | -5.2 | -0.6 | 0.9 | -0.4 |

ACTUAL PRIVATE NEW CAPITAL EXPENDITURE BY SELECTED INDUSTRY AND TYPE OF ASSET
South Australia

| Period | Industry | | | | Type of Asset | |
|---|---------------|-------------|------------------|---------|------------------------------|--------------------------------|
| | Manufacturing | Finance etc | Other industries | Total | New buildings and structures | Equipment, plant and machinery |
| ANNUAL (\$ million) | | | | | | |
| 1982-83 | 217.6 | 119.9 | 824.6 | 1,162.1 | 227.1 | 934.9 |
| 1983-84 | 218.8 | 173.5 | 724.3 | 1,116.6 | 258.5 | 858.1 |
| 1984-85 | 334.7 | 252.4 | 562.1 | 1,149.2 | 303.5 | 845.8 |
| 1985-86 | 396.8 | 211.2 | 689.8 | 1,297.8 | 358.3 | 939.5 |
| 1986-87 | 496.0 | 313.6 | 699.1 | 1,508.7 | 516.3 | 992.5 |
| 1987-88 | 659.2 | 379.4 | 846.3 | 1,884.9 | 530.4 | 1,354.5 |
| 1988-89 | 633.0 | 444.3 | 691.6 | 1,768.9 | 609.8 | 1,159.1 |
| 1989-90 | 763.3 | 472.0 | 546.2 | 1,781.5 | 633.1 | 1,148.3 |
| 1990-91 | 744.8 | 412.2 | 673.3 | 1,830.3 | 627.9 | 1,202.5 |
| 1991-92 | 766.0 | 158.0 | 701.0 | 1,625.0 | 392.0 | 1,233.0 |
| 1992-93 | 571.0 | 274.0 | 736.0 | 1,581.0 | 413.0 | 1,168.0 |
| PERCENTAGE CHANGE FROM PREVIOUS YEAR | | | | | | |
| 1983-84 | 0.6 | 44.7 | -12.2 | -3.9 | 13.8 | -8.2 |
| 1984-85 | 53.0 | 45.5 | -22.4 | 2.9 | 17.4 | -1.4 |
| 1985-86 | 18.6 | -16.3 | 22.7 | 12.9 | 18.1 | 11.1 |
| 1986-87 | 25.0 | 48.5 | 1.3 | 16.3 | 44.1 | 5.6 |
| 1987-88 | 32.9 | 21.0 | 21.1 | 24.9 | 2.7 | 36.5 |
| 1988-89 | -4.0 | 17.1 | -18.3 | -6.2 | 15.0 | -14.4 |
| 1989-90 | 20.6 | 6.2 | -21.0 | 0.7 | 3.8 | -0.9 |
| 1990-91 | -2.4 | -12.7 | 23.3 | 2.7 | -0.8 | 4.7 |
| 1991-92 | 2.8 | -61.7 | 4.1 | -11.2 | -37.6 | 2.5 |
| 1992-93 | -25.5 | 73.4 | 5.0 | -2.7 | 5.4 | -5.3 |
| QUARTERLY (\$ million) | | | | | | |
| 1991-92 - September | 215.1 | 55.5 | 157.5 | 428.1 | 131.0 | 297.1 |
| December | 205.8 | 40.2 | 215.2 | 461.2 | 106.9 | 354.3 |
| March | 154.8 | 29.2 | 140.9 | 324.9 | 73.2 | 251.8 |
| June | 190.4 | 33.3 | 187.5 | 411.2 | 81.0 | 330.2 |
| 1992-93 - September | 139.0 | 51.8 | 140.9 | 331.7 | 84.6 | 247.1 |
| December | 144.2 | 97.3 | 210.1 | 451.6 | 147.8 | 303.8 |
| March | 143.4 | 96.3 | 159.1 | 398.8 | 126.8 | 272.0 |
| June | 144.3 | 28.8 | 225.5 | 398.6 | 53.5 | 345.1 |
| 1993-94 - September | 130.6 | 26.3 | 264.7 | 421.6 | 87.8 | 333.8 |
| PERCENTAGE CHANGE FROM PREVIOUS QUARTER | | | | | | |
| 1991-92 - December | -4.3 | -27.6 | 36.6 | 7.7 | -18.4 | 19.3 |
| March | -24.8 | -27.4 | -34.5 | -29.6 | -31.5 | -28.9 |
| June | 23.0 | 14.0 | 38.1 | 26.6 | 10.7 | 31.1 |
| 1992-93 - September | -27.0 | 55.6 | -24.9 | -19.3 | 4.4 | -25.2 |
| December | 3.7 | 87.8 | 49.1 | 36.1 | 74.7 | 22.9 |
| March | -0.6 | -1.0 | -24.3 | -11.7 | -14.2 | -10.5 |
| June | 0.6 | -70.1 | 41.7 | -0.1 | -57.8 | 26.9 |
| 1993-94 - September | -9.5 | -8.7 | 17.4 | 5.8 | 64.1 | -3.3 |

BUILDING APPROVALS: South Australia

| Period | Number of dwelling units | | | | Value (\$ million) | | | |
|--|--------------------------|--------|----------------|--------|--------------------------|---|--------------------------|----------------|
| | Houses | | Total | | New residential building | Alterations and additions to residential building | Non-residential building | Total building |
| | Private sector | Total | Private sector | Total | | | | |
| ANNUAL | | | | | | | | |
| 1982-83 | 5,196 | 6,178 | 6,456 | 8,789 | 320 | 39 | 295 | 655 |
| 1983-84 | 8,663 | 9,751 | 11,117 | 13,490 | 532 | 53 | 384 | 969 |
| 1984-85 | 8,719 | 9,923 | 12,406 | 15,053 | 672 | 72 | 550 | 1,294 |
| 1985-86 | 6,392 | 7,382 | 8,873 | 10,940 | 545 | 80 | 619 | 1,244 |
| 1986-87 | 5,811 | 6,706 | 7,069 | 9,119 | 487 | 82 | 584 | 1,152 |
| 1987-88 | 6,276 | 6,900 | 7,355 | 8,942 | 497 | 94 | 749 | 1,340 |
| 1988-89 | 7,526 | 8,006 | 9,597 | 11,162 | 690 | 109 | 895 | 1,694 |
| 1989-90 | 7,246 | 7,675 | 10,158 | 11,646 | 733 | 110 | 914 | 1,757 |
| 1990-91 | 8,351 | 8,633 | 10,399 | 11,407 | 755 | 119 | 591 | 1,465 |
| 1991-92 | 8,613 | 8,931 | 10,222 | 11,258 | 756 | 124 | 627 | 1,506 |
| 1992-93 | 9,710 | 10,087 | 11,519 | 12,312 | 841 | 133 | 418 | 1,392 |
| PERCENTAGE CHANGE FROM PREVIOUS YEAR | | | | | | | | |
| 1983-84 | 66.7 | 57.8 | 72.2 | 53.5 | 65.9 | 37.0 | 29.9 | 48.0 |
| 1984-85 | 0.6 | 1.8 | 11.6 | 11.6 | 26.3 | 35.5 | 43.3 | 33.5 |
| 1985-86 | -26.7 | -25.6 | -28.5 | -27.3 | -18.9 | 10.5 | 12.6 | -3.9 |
| 1986-87 | -9.1 | -9.2 | -20.3 | -16.6 | -10.7 | 2.3 | -5.7 | -7.4 |
| 1987-88 | 8.0 | 2.9 | 4.0 | -1.9 | 2.2 | 14.6 | 28.2 | 16.3 |
| 1988-89 | 19.9 | 16.0 | 30.5 | 24.8 | 38.8 | 16.0 | 19.5 | 26.4 |
| 1989-90 | -3.7 | -4.1 | 5.8 | 4.3 | 6.1 | 1.2 | 2.1 | 3.7 |
| 1990-91 | 15.2 | 12.5 | 2.4 | -2.1 | 3.1 | 8.6 | -35.4 | -16.6 |
| 1991-92 | 3.1 | 3.5 | -1.7 | -1.3 | 0.1 | 3.9 | 6.1 | 2.8 |
| 1992-93 | 12.7 | 12.9 | 12.7 | 9.4 | 11.3 | 7.1 | -33.2 | -7.6 |
| MONTHLY, ORIGINAL | | | | | | | | |
| 1992-93 - | | | | | | | | |
| October | 733 | 746 | 934 | 980 | 66.4 | 10.9 | 73.3 | 150.6 |
| November | 793 | 821 | 925 | 982 | 68.0 | 9.7 | 45.7 | 123.3 |
| December | 755 | 777 | 1,041 | 1,145 | 73.7 | 10.6 | 24.8 | 109.2 |
| January | 651 | 664 | 776 | 811 | 54.8 | 8.3 | 14.4 | 77.5 |
| February | 876 | 903 | 1,020 | 1,081 | 73.5 | 9.5 | 54.8 | 137.8 |
| March | 891 | 960 | 1,018 | 1,136 | 79.3 | 13.6 | 21.0 | 113.9 |
| April | 778 | 833 | 924 | 1,000 | 67.9 | 13.1 | 37.1 | 118.2 |
| May | 848 | 895 | 966 | 1,059 | 75.1 | 11.1 | 36.1 | 122.3 |
| June | 883 | 966 | 970 | 1,109 | 75.7 | 11.4 | 23.7 | 110.9 |
| 1993-94 - | | | | | | | | |
| July | 916 | 949 | 1,071 | 1,138 | 83.5 | 10.8 | 32.8 | 127.1 |
| August | 1,007 | 1,044 | 1,117 | 1,188 | 85.9 | 10.9 | 16.3 | 113.1 |
| September | 795 | 798 | 890 | 893 | 61.7 | 10.3 | 47.1 | 119.2 |
| October | 723 | 734 | 845 | 858 | 57.8 | 9.4 | 29.5 | 96.7 |
| November | 831 | 858 | 935 | 1,014 | 73.4 | 11.7 | 30.4 | 115.5 |
| December | 739 | 758 | 871 | 925 | 66.5 | 9.3 | 27.4 | 103.1 |
| MONTHLY, TREND ESTIMATES | | | | | | | | |
| 1992-93 - | | | | | | | | |
| November | 804 | 822 | 994 | 1045 | n.a. | n.a. | n.a. | n.a. |
| December | 839 | 857 | 1022 | 1070 | | | | |
| January | 870 | 889 | 1035 | 1083 | | | | |
| February | 881 | 904 | 1027 | 1078 | | | | |
| March | 874 | 906 | 1006 | 1067 | | | | |
| April | 855 | 897 | 978 | 1058 | | | | |
| May | 832 | 883 | 953 | 1051 | | | | |
| June | 816 | 871 | 939 | 1045 | | | | |
| 1993-94 - | | | | | | | | |
| July | 811 | 865 | 936 | 1038 | | | | |
| August | 816 | 862 | 935 | 1023 | | | | |
| September | 814 | 852 | 929 | 999 | | | | |
| October | 806 | 834 | 919 | 974 | | | | |
| November | 796 | 817 | 908 | 952 | | | | |
| December | 787 | 800 | 901 | 934 | | | | |
| PERCENTAGE CHANGE FROM PREVIOUS MONTH, TREND ESTIMATES | | | | | | | | |
| 1992-93 - | | | | | | | | |
| November | 3.5 | 3.1 | 3.2 | 2.7 | n.a. | n.a. | n.a. | n.a. |
| December | 4.4 | 4.3 | 2.8 | 2.4 | | | | |
| January | 3.7 | 3.7 | 1.3 | 1.2 | | | | |
| February | 1.3 | 1.7 | -0.8 | -0.5 | | | | |
| March | -0.8 | 0.2 | -2.0 | -1.0 | | | | |
| April | -2.2 | -1.0 | -2.8 | -0.8 | | | | |
| May | -2.7 | -1.6 | -2.6 | -0.7 | | | | |
| June | -2.0 | -1.5 | -1.5 | -0.7 | | | | |
| 1993-94 - | | | | | | | | |
| July | -0.5 | -0.7 | -0.3 | -0.7 | | | | |
| August | 0.5 | -0.2 | -0.1 | -1.4 | | | | |
| September | 0.2 | -0.8 | -0.5 | -2.0 | | | | |
| October | -0.2 | -1.2 | -0.8 | -2.3 | | | | |
| November | -0.2 | -0.8 | -0.5 | -1.5 | | | | |

BUILDING COMMENCEMENTS
South Australia

| Period | Number of dwelling units | | | | Value (\$ million) | | | | |
|------------------------|--------------------------|-------|----------------|--------|--------------------------|--|--------------------------|-------|----------------|
| | Houses | | Total | | New residential building | Alterations and additions to residential buildings | Non-residential building | | Total building |
| | Private sector | Total | Private sector | Total | | | Private sector | Total | |
| ANNUAL | | | | | | | | | |
| 1982-83 | 4,567 | 5,522 | 5,766 | 8,080 | 310.3 | 37.8 | 193.4 | 301.1 | 649.0 |
| 1983-84 | 7,666 | 8,642 | 9,854 | 12,200 | 506.4 | 49.5 | 190.3 | 341.7 | 897.6 |
| 1984-85 | 8,502 | 9,641 | 11,728 | 14,205 | 660.3 | 66.0 | 345.6 | 509.7 | 1,236.1 |
| 1985-86 | 6,334 | 7,267 | 8,805 | 10,705 | 558.5 | 80.9 | 430.7 | 602.4 | 1,241.7 |
| 1986-87 | 5,345 | 6,458 | 6,524 | 8,913 | 475.7 | 75.3 | 430.1 | 674.4 | 1,225.4 |
| 1987-88 | 5,664 | 6,388 | 6,709 | 8,443 | 472.9 | 92.2 | 527.2 | 718.8 | 1,283.9 |
| 1988-89 | 7,132 | 7,580 | 8,822 | 10,235 | 642.2 | 103.7 | 760.3 | 964.1 | 1,709.9 |
| 1989-90 | 6,734 | 7,174 | 9,412 | 10,936 | 718.2 | 111.6 | 669.6 | 934.2 | 1,764.0 |
| 1990-91 | 7,862 | 8,176 | 9,672 | 10,820 | 727.5 | 118.2 | 367.0 | 553.9 | 1,399.6 |
| 1991-92 | 8,036 | 8,344 | 9,608 | 10,671 | 727.2 | 125.1 | 344.5 | 607.8 | 1,460.2 |
| 1992-93 | 9,079 | 9,373 | 10,838 | 11,592 | 816.6 | 122.2 | 270.5 | 458.9 | 1,398.0 |
| QUARTERLY | | | | | | | | | |
| 1991-92 - September | 2,006 | 2,080 | 2,440 | 2,726 | 186.5 | 28.6 | 72.4 | 122.2 | 337.4 |
| December | 1,965 | 2,042 | 2,386 | 2,733 | 183.3 | 33.3 | 81.9 | 118.9 | 335.6 |
| March | 1,955 | 2,053 | 2,361 | 2,590 | 174.8 | 30.7 | 67.1 | 132.6 | 338.0 |
| June | 2,110 | 2,169 | 2,421 | 2,622 | 182.6 | 32.5 | 123.0 | 234.1 | 449.2 |
| 1992-93 - September | 2,293 | 2,353 | 2,581 | 2,795 | 190.0 | 27.9 | 64.9 | 113.9 | 331.9 |
| December | 2,325 | 2,356 | 2,802 | 2,907 | 206.4 | 32.3 | 56.5 | 148.2 | 386.9 |
| March | 2,136 | 2,204 | 2,704 | 2,910 | 203.4 | 23.9 | 37.8 | 88.1 | 315.5 |
| June | 2,369 | 2,504 | 2,795 | 3,024 | 216.3 | 38.2 | 46.3 | 108.4 | 363.0 |
| 1993-94 - September | 2,559 | 2,724 | 2,931 | 3,198 | 233.4 | 30.9 | 41.0 | 74.0 | 338.3 |

VALUE OF BUILDING WORK DONE DURING PERIOD
South Australia

| Period | New residential building | | | | Alterations and additions to residential buildings | Non-residential building | | Total building | |
|-------------------------------|--------------------------|-------|----------------|-------|--|--------------------------|-------|----------------|---------|
| | Houses | | Total | | | Private sector | Total | Private sector | Total |
| | Private sector | Total | Private sector | Total | | | | | |
| ANNUAL (\$ million) | | | | | | | | | |
| 1982-83 | 195.1 | 225.9 | 248.3 | 312.3 | 38.2 | 169.3 | 313.2 | 454.5 | 663.7 |
| 1983-84 | 312.0 | 348.0 | 385.2 | 464.5 | 48.3 | 194.8 | 327.0 | 627.0 | 839.8 |
| 1984-85 | 414.4 | 456.3 | 542.3 | 626.7 | 65.6 | 285.1 | 433.4 | 891.6 | 1,125.7 |
| 1985-86 | 369.2 | 411.5 | 497.9 | 585.1 | 78.7 | 413.6 | 589.7 | 988.5 | 1,253.4 |
| 1986-87 | 310.0 | 364.8 | 385.4 | 492.2 | 78.4 | 447.9 | 645.2 | 908.1 | 1,215.8 |
| 1987-88 | 343.8 | 381.1 | 391.4 | 467.7 | 88.2 | 551.8 | 811.2 | 1,027.0 | 1,367.1 |
| 1988-89 | 450.2 | 469.2 | 538.8 | 597.0 | 104.1 | 657.5 | 902.2 | 1,297.3 | 1,603.3 |
| 1989-90 | 493.8 | 518.9 | 657.4 | 724.9 | 116.3 | 743.2 | 988.6 | 1,514.0 | 1,829.8 |
| 1990-91 | 578.3 | 600.2 | 713.6 | 782.3 | 122.0 | 621.9 | 876.6 | 1,455.4 | 1,780.8 |
| 1991-92 | 591.5 | 607.5 | 693.4 | 748.5 | 125.1 | 310.3 | 484.1 | 1,127.5 | 1,357.6 |
| 1992-93 | 647.2 | 660.9 | 743.8 | 780.6 | 127.1 | 297.9 | 570.9 | 1,166.3 | 1,478.6 |
| QUARTERLY (\$ million) | | | | | | | | | |
| 1991-92 - September | 145.2 | 148.9 | 174.3 | 187.1 | 29.5 | 82.8 | 128.3 | 286.1 | 344.9 |
| December | 146.7 | 151.0 | 174.0 | 189.1 | 32.6 | 77.7 | 120.9 | 283.9 | 342.6 |
| March | 142.6 | 146.5 | 169.5 | 182.8 | 28.3 | 78.9 | 114.3 | 276.6 | 325.4 |
| June | 156.9 | 161.2 | 175.7 | 189.5 | 34.7 | 70.9 | 120.5 | 280.8 | 344.7 |
| 1992-93 - September | 157.5 | 160.8 | 174.6 | 184.7 | 30.9 | 88.1 | 147.2 | 293.5 | 362.8 |
| December | 163.3 | 166.3 | 185.9 | 194.8 | 34.7 | 91.5 | 171.4 | 312.1 | 400.9 |
| March | 155.0 | 157.2 | 182.7 | 189.4 | 25.6 | 56.0 | 111.3 | 264.1 | 326.3 |
| June | 171.3 | 176.6 | 200.6 | 211.8 | 35.9 | 62.3 | 140.9 | 296.6 | 388.7 |
| 1993-94 - September | 195.4 | 201.8 | 221.9 | 233.6 | 32.3 | 57.9 | 134.4 | 312.1 | 400.3 |

PRODUCTION, SELECTED COMMODITIES
South Australia

| Period | Footwear (pairs) | Ready-mixed concrete (m ³) | Electricity (including NT) ('000 kWh) | Coal (tonnes) | Sawn timber ^(a) (m ³) |
|---|---------------------|--|---|------------------|--|
| ANNUAL | | | | | |
| 1982-83 | 1,794,953 | 833,576 | 8,905,005 | 1,434,854 | 320,019 |
| 1983-84 | 1,975,840 | 976,127 | 8,735,184 | 1,177,345 | 275,365 |
| 1984-85 | 2,053,113 | 1,090,021 | 9,283,122 | 1,750,885 | 230,680 |
| 1985-86 | 2,209,898 | 1,092,344 | 9,606,839 | 2,181,713 | 221,803 |
| 1986-87 | 2,147,468 | 954,349 | 9,666,694 | 2,435,010 | 194,458 |
| 1987-88 | 1,982,301 | 1,004,040 | 10,137,144 | 2,566,347 | 254,453 |
| 1988-89 | 2,062,085 | 1,123,389 | 10,588,647 | 2,674,215 | 292,335 |
| 1989-90 | 1,749,112 | 1,116,940 | 10,665,118 | 2,921,861 | 228,156 |
| 1990-91 | 1,837,602 | 951,472 | 8,878,357 | 2,441,040 | 240,193 |
| 1991-92 | 1,834,835 | 856,080 | 10,025,649 | 2,819,880 | 271,603 |
| 1992-93 | 1,406,434 | 936,039 | 10,226,734 | 2,753,610 | 317,096 |
| PERCENTAGE CHANGE FROM PREVIOUS YEAR | | | | | |
| 1983-84 | 10.1 | 17.1 | -1.9 | -17.9 | -14.0 |
| 1984-85 | 3.9 | 11.7 | 6.3 | 48.7 | -16.2 |
| 1985-86 | 7.6 | 0.2 | 3.5 | 24.6 | -3.8 |
| 1986-87 | -2.8 | -12.6 | 0.6 | 11.6 | -12.3 |
| 1987-88 | -7.7 | 5.2 | 4.9 | 5.4 | 30.9 |
| 1988-89 | 4.0 | 11.9 | 4.5 | 4.2 | 14.9 |
| 1989-90 | -15.2 | -0.6 | 0.7 | 9.3 | -22.0 |
| 1990-91 | 5.1 | -14.8 | -16.8 | -16.5 | 5.3 |
| 1991-92 | -0.2 | -10.0 | 12.9 | 15.5 | 13.1 |
| 1992-93 | -23.3 | 9.3 | 2.0 | -2.4 | 16.7 |
| MONTHLY/QUARTERLY^(b), ORIGINAL | | | | | |
| 1992-93 - | | | | | |
| October | 102,586 | 79,943 | 828,071 | 152,160 | .. |
| November | 123,564 | 84,168 | 771,207 | 199,560 | .. |
| December | 100,241 | 81,638 | 811,341 | 254,850 | 83,612 |
| January | 50,837 | 70,294 | 737,756 | 225,840 | .. |
| February | 103,780 | 75,502 | 805,976 | 229,560 | .. |
| March | 128,261 | 92,530 | 829,563 | 237,600 | 78,717 |
| April | 86,062 | 78,430 | 808,408 | 249,060 | .. |
| May | 104,623 | 82,506 | 833,809 | 249,600 | .. |
| June | 123,169 | 79,147 | 886,020 | 220,620 | 86,084 |
| 1993-94 - | | | | | |
| July | 115,467 | 80,594 | 964,812 | 268,500 | .. |
| August | 120,921 | 80,062 | 929,952 | 210,060 | .. |
| September | 143,199 | 80,364 | 863,810 | 144,000 | 79,334 |
| October | 123,847 | 74,022 | 847,992 | 105,420 | .. |
| November | 127,479 | 80,947 | 944,263 | 201,660 | .. |
| December | 108,368 | n.y.a. | 874,827 | 258,420 | 97,033 |
| MONTHLY/QUARTERLY^(b), SEASONALLY ADJUSTED | | | | | |
| 1992-93 - | | | | | |
| October | n.a. | 71,949 | 862,081 | n.a. | .. |
| November | | 75,678 | 797,703 | | .. |
| December | | 86,931 | 845,071 | | 83,128 |
| January | | 101,455 | 744,176 | | .. |
| February | | 77,344 | 835,522 | | .. |
| March | | 79,468 | 820,881 | | 90,716 |
| April | | 83,080 | 908,738 | | .. |
| May | | 75,200 | 833,639 | | .. |
| June | | 81,365 | 827,996 | | 82,224 |
| 1993-94 - | | | | | |
| July | | 81,156 | 889,585 | | .. |
| August | | 83,286 | 846,477 | | .. |
| September | | 77,885 | 876,002 | | 73,502 |
| October | | 69,266 | 872,144 | | .. |
| November | | 71,292 | 986,437 | | .. |
| December | | n.y.a. | 909,611 | | 96,381 |
| PERCENTAGE CHANGE FROM PREVIOUS MONTH/QUARTER^(b), SEASONALLY ADJUSTED | | | | | |
| 1992-93 - | | | | | |
| November | n.a. | 5.2 | -7.5 | n.a. | .. |
| December | | 14.9 | 5.9 | | 30.8 |
| January | | 16.7 | -11.9 | | .. |
| February | | -23.8 | 12.3 | | .. |
| March | | 2.7 | -1.8 | | 9.1 |
| April | | 4.5 | 10.7 | | .. |
| May | | -9.5 | -8.3 | | .. |
| June | | 8.2 | -0.7 | | -9.4 |
| 1993-94 - | | | | | |
| July | | -0.3 | 7.4 | | .. |
| August | | 2.6 | -4.8 | | .. |
| September | | -6.5 | 3.5 | | -10.6 |
| October | | -11.1 | -0.4 | | .. |
| November | | 2.9 | 13.1 | | .. |
| December | | n.y.a. | -7.8 | | 31.1 |

(a) From Australian softwood logs only.

(b) Sawn timber production data available quarterly only.

PRODUCTION, LIVESTOCK AND SELECTED COMMODITIES
South Australia

| <i>Period</i> | <i>Chicken</i> | <i>Pigmeat</i> | <i>Beef</i> | <i>Mutton</i> | <i>Lamb</i> | <i>Cheese</i> | <i>Wheat flour, other than self-raising</i> |
|--|----------------|----------------|-------------|---------------|-------------|---------------|---|
| ANNUAL (tonnes) | | | | | | | |
| 1982-83 | 31,213 | 34,302 | 102,058 | 43,422 | 32,525 | 19,975 | 71,757 |
| 1983-84 | 33,549 | 34,740 | 81,172 | 23,758 | 31,114 | 25,226 | 78,690 |
| 1984-85 | 35,882 | 36,508 | 79,111 | 35,800 | 30,136 | 23,273 | 74,643 |
| 1985-86 | 34,235 | 37,432 | 77,898 | 41,507 | 31,485 | 25,086 | 73,926 |
| 1986-87 | 33,776 | 40,761 | 90,289 | 43,934 | 32,416 | 27,438 | 80,310 |
| 1987-88 | 34,907 | 36,671 | 91,701 | 45,562 | 34,335 | 25,497 | 91,325 |
| 1988-89 | 32,946 | 40,364 | 87,160 | 42,159 | 36,203 | 24,704 | 96,418 |
| 1989-90 | 35,248 | 40,815 | 99,699 | 50,939 | 38,052 | 22,774 | 88,503 |
| 1990-91 | 31,945 | 38,644 | 87,036 | 65,434 | 32,038 | 24,522 | 83,727 |
| 1991-92 | 36,978 | 34,538 | 90,661 | 72,578 | 29,941 | 23,494 | 81,065 |
| 1992-93 | 38,619 | 38,153 | 96,338 | 65,689 | 39,334 | 25,864 | 87,761 |
| PERCENTAGE CHANGE FROM PREVIOUS YEAR | | | | | | | |
| 1983-84 | 7.5 | 1.3 | -20.5 | -45.3 | -4.3 | 26.3 | 9.7 |
| 1984-85 | 7.0 | 5.1 | -2.5 | 50.7 | -3.1 | -7.7 | -5.1 |
| 1985-86 | -4.6 | 2.5 | -1.5 | 15.9 | 4.5 | 7.8 | -1.0 |
| 1986-87 | -1.3 | 8.9 | 15.9 | 5.8 | 3.0 | 9.4 | 8.6 |
| 1987-88 | 3.3 | -10.0 | 1.6 | 3.7 | 5.9 | -7.1 | 13.7 |
| 1988-89 | -5.6 | 10.1 | -5.0 | -7.5 | 5.4 | -3.1 | 5.6 |
| 1989-90 | 7.0 | 1.1 | 14.4 | 20.8 | 5.1 | -7.8 | -8.2 |
| 1990-91 | -9.4 | -5.3 | -12.7 | 28.5 | -15.8 | 7.7 | -5.4 |
| 1991-92 | 15.8 | -10.6 | 4.2 | 10.9 | -6.5 | -4.2 | -3.2 |
| 1992-93 | 4.4 | 10.5 | 6.3 | -9.5 | 31.4 | 10.1 | 8.3 |
| MONTHLY (tonnes) | | | | | | | |
| <i>1992-93 -</i> | | | | | | | |
| October | 3,713 | 3,052 | 8,027 | 6,220 | 4,028 | 3,263 | 7,636 |
| November | 3,141 | 3,596 | 10,306 | 6,612 | 3,753 | 2,986 | 7,599 |
| December | 3,494 | 2,785 | 9,684 | 5,619 | 3,278 | 2,252 | 5,851 |
| January | 3,517 | 2,750 | 7,921 | 4,880 | 2,528 | 2,385 | 7,111 |
| February | 1,990 | 3,030 | 8,271 | 5,664 | 2,717 | 1,677 | 7,096 |
| March | 3,109 | 3,257 | 9,681 | 6,688 | 3,918 | 1,461 | 6,763 |
| April | 3,563 | 3,021 | 6,842 | 4,988 | 3,294 | 1,469 | 7,356 |
| May | 3,223 | 3,684 | 7,547 | 5,396 | 3,540 | 1,858 | 8,774 |
| June | 3,256 | 3,344 | 7,305 | 4,633 | 3,723 | 1,462 | 7,312 |
| <i>1993-94 -</i> | | | | | | | |
| July | 3,565 | 3,245 | 7,142 | 3,825 | 2,530 | 2,332 | 6,712 |
| August | 3,103 | 3,613 | 6,424 | 4,914 | 2,218 | 2,300 | 5,984 |
| September | 3,048 | 3,430 | 9,437 | 8,002 | 3,084 | 2,536 | 6,506 |
| October | 3,388 | 3,151 | 8,699 | 7,776 | 3,616 | n.y.a. | 5,634 |
| November | 3,024 | 3,529 | 9,313 | 9,320 | 3,860 | n.y.a. | n.y.a. |
| December | 3,699 | 2,563 | 7,715 | 6,203 | 3,325 | n.y.a. | n.y.a. |
| PERCENTAGE CHANGE FROM PREVIOUS MONTH | | | | | | | |
| <i>1992-93 -</i> | | | | | | | |
| November | -15.4 | 17.8 | 28.4 | 6.3 | -6.8 | -8.5 | -0.5 |
| December | 11.2 | -22.6 | -6.0 | -15.0 | -12.7 | -24.6 | -23.0 |
| January | 0.7 | -1.3 | -18.2 | -13.2 | -22.9 | 5.9 | 21.5 |
| February | -43.4 | 10.2 | 4.4 | 16.1 | 7.5 | -29.7 | -0.2 |
| March | 56.2 | 7.5 | 17.1 | 18.1 | 44.2 | -12.9 | -4.7 |
| April | 14.6 | -7.2 | -29.3 | -25.4 | -15.9 | 0.5 | 8.8 |
| May | -9.5 | 21.9 | 10.3 | 8.2 | 7.5 | 26.5 | 19.3 |
| June | 1.0 | -9.2 | -3.2 | -14.1 | 5.2 | -21.3 | -16.7 |
| <i>1993-94 -</i> | | | | | | | |
| July | 9.5 | -3.0 | -2.2 | -17.4 | -32.0 | 59.5 | -8.2 |
| August | -13.0 | 11.9 | -10.1 | 28.5 | -12.3 | -1.4 | -10.8 |
| September | -1.8 | -5.1 | 46.9 | 62.8 | 39.0 | 10.3 | 8.7 |
| October | 11.2 | -8.1 | -7.8 | -2.8 | 17.3 | n.y.a. | -13.4 |
| November | -10.7 | 12.0 | 7.1 | 19.9 | 6.7 | n.y.a. | n.y.a. |
| December | 22.3 | -27.4 | -17.2 | -33.4 | -13.9 | n.y.a. | n.y.a. |

CONSUMER PRICE INDEX: BY GROUP
Adelaide

| Period | Food | Clothing | Housing | Household equipment and operation | Transport- ation | Tobacco and alcohol | Health and personal care | Recreation and education | All groups |
|--|-------|----------|---------|--|---------------------|---------------------------|--------------------------------|--------------------------------|---------------|
| ANNUAL AVERAGE (1989-90 = 100.0) | | | | | | | | | |
| 1982-83 | 63.0 | 60.8 | 56.0 | 64.0 | 58.8 | 54.3 | 76.0 | 62.3 | 61.4 |
| 1983-84 | 67.4 | 64.1 | 61.8 | 69.0 | 64.3 | 61.6 | 71.5 | 66.1 | 65.8 |
| 1984-85 | 71.2 | 68.4 | 68.3 | 73.2 | 68.3 | 67.2 | 57.8 | 68.9 | 68.9 |
| 1985-86 | 77.0 | 74.0 | 73.4 | 78.9 | 74.8 | 72.7 | 63.2 | 74.9 | 74.7 |
| 1986-87 | 83.2 | 81.8 | 76.9 | 84.3 | 83.0 | 79.4 | 75.6 | 82.1 | 81.5 |
| 1987-88 | 87.6 | 88.2 | 79.5 | 89.9 | 88.6 | 85.7 | 84.0 | 89.6 | 87.0 |
| 1988-89 | 95.2 | 95.3 | 87.0 | 95.1 | 94.2 | 92.5 | 90.8 | 94.6 | 93.3 |
| 1989-90 | 100.0 | 100.0 | 100.0 | 100.0 | 100.0 | 100.0 | 100.0 | 100.0 | 100.0 |
| 1990-91 | 103.8 | 103.6 | 104.1 | 105.4 | 107.0 | 112.0 | 113.4 | 104.8 | 106.2 |
| 1991-92 | 106.0 | 105.3 | 100.4 | 107.5 | 110.5 | 118.6 | 127.8 | 107.7 | 108.9 |
| 1992-93 | 109.3 | 107.0 | 94.3 | 107.6 | 115.0 | 131.2 | 134.9 | 110.7 | 111.2 |
| PERCENTAGE CHANGE FROM PREVIOUS YEAR, ANNUAL AVERAGE | | | | | | | | | |
| 1983-84 | 7.0 | 5.4 | 10.4 | 7.8 | 9.4 | 13.4 | -5.9 | 6.1 | 7.2 |
| 1984-85 | 5.6 | 6.7 | 10.5 | 6.1 | 6.2 | 9.1 | -19.2 | 4.2 | 4.7 |
| 1985-86 | 8.1 | 8.2 | 7.5 | 7.8 | 9.5 | 8.2 | 9.3 | 8.7 | 8.4 |
| 1986-87 | 8.1 | 10.5 | 4.8 | 6.8 | 11.0 | 9.2 | 19.6 | 9.6 | 9.1 |
| 1987-88 | 5.3 | 7.8 | 3.4 | 6.6 | 6.7 | 7.9 | 11.1 | 9.1 | 6.7 |
| 1988-89 | 8.7 | 8.0 | 9.4 | 5.8 | 6.3 | 7.9 | 8.1 | 5.6 | 7.2 |
| 1989-90 | 5.0 | 4.9 | 14.9 | 5.2 | 6.2 | 8.1 | 10.1 | 5.7 | 7.2 |
| 1990-91 | 3.8 | 3.6 | 4.1 | 5.4 | 7.0 | 12.0 | 13.4 | 4.8 | 6.2 |
| 1991-92 | 2.1 | 1.6 | -3.6 | 2.0 | 3.3 | 5.9 | 12.7 | 2.8 | 2.5 |
| 1992-93 | 3.1 | 1.6 | -6.1 | 0.1 | 4.1 | 10.6 | 5.6 | 2.8 | 2.1 |
| QUARTERLY (1989-90 = 100.0) | | | | | | | | | |
| 1991-92 - December | 105.9 | 104.9 | 102.3 | 107.6 | 110.5 | 118.1 | 124.2 | 106.8 | 108.6 |
| March | 106.4 | 105.2 | 99.8 | 107.3 | 110.9 | 119.2 | 134.1 | 108.8 | 109.5 |
| June | 106.9 | 106.1 | 97.3 | 108.1 | 111.2 | 119.6 | 131.6 | 108.9 | 109.4 |
| 1992-93 - September | 107.3 | 106.0 | 95.4 | 108.1 | 113.7 | 126.5 | 131.5 | 108.9 | 110.1 |
| December | 108.1 | 107.2 | 94.0 | 108.1 | 115.1 | 130.4 | 132.2 | 109.9 | 110.7 |
| March | 111.3 | 107.2 | 94.0 | 106.7 | 114.9 | 131.3 | 136.8 | 111.7 | 111.6 |
| June | 110.4 | 107.6 | 93.8 | 107.3 | 116.1 | 136.4 | 138.9 | 112.3 | 112.3 |
| 1993-94 - September | 110.4 | 107.5 | 93.3 | 107.5 | 117.3 | 138.8 | 138.7 | 112.8 | 112.7 |
| December | 111.3 | 107.1 | 91.6 | 108.2 | 117.6 | 140.0 | 138.4 | 113.0 | 112.6 |
| PERCENTAGE CHANGE FROM SAME QUARTER OF PREVIOUS YEAR | | | | | | | | | |
| 1991-92 - December | 2.0 | 1.4 | -2.8 | 2.0 | -0.6 | 5.6 | 15.6 | 1.6 | 1.8 |
| March | 1.7 | 1.3 | -3.9 | 1.6 | 4.1 | 4.8 | 20.8 | 2.8 | 2.6 |
| June | 1.9 | 1.2 | -6.2 | 1.2 | 5.0 | 2.4 | 10.6 | 3.7 | 2.0 |
| 1992-93 - September | 2.3 | 0.9 | -6.7 | 0.9 | 4.1 | 7.8 | 8.5 | 2.5 | 1.9 |
| December | 2.1 | 2.2 | -8.1 | 0.5 | 4.2 | 10.4 | 6.4 | 2.9 | 1.7 |
| March | 4.6 | 1.9 | -5.8 | -0.6 | 3.6 | 10.2 | 2.0 | 2.7 | 1.9 |
| June | 3.3 | 1.4 | -3.6 | -0.7 | 4.4 | 14.0 | 5.5 | 3.1 | 2.7 |
| 1993-94 - September | 2.9 | 1.4 | -2.2 | -0.6 | 3.2 | 9.7 | 5.5 | 3.6 | 2.4 |
| December | 3.0 | -0.1 | -2.6 | 0.1 | 2.2 | 7.4 | 4.7 | 2.8 | 1.9 |
| PERCENTAGE CHANGE FROM PREVIOUS QUARTER | | | | | | | | | |
| 1991-92 - March | 0.5 | 0.3 | -2.4 | -0.3 | 0.4 | 0.9 | 8.0 | 1.9 | 0.6 |
| June | 0.5 | 0.9 | -2.5 | 0.7 | 0.3 | 0.3 | -1.9 | 0.1 | -0.1 |
| 1992-93 - September | 0.4 | -0.1 | -2.0 | 0.0 | 2.2 | 5.8 | -0.1 | 0.0 | 0.6 |
| December | 0.7 | 1.1 | -1.5 | 0.0 | 1.2 | 3.1 | 0.5 | 0.9 | 0.5 |
| March | 3.0 | 0.0 | 0.0 | -1.3 | -0.2 | 0.7 | 3.5 | 1.6 | 0.6 |
| June | -0.8 | 0.4 | -0.2 | 0.6 | 1.0 | 3.9 | 1.5 | 0.5 | 0.6 |
| 1993-94 - September | 0.0 | -0.1 | -0.5 | 0.2 | 1.0 | 1.8 | -0.1 | 0.4 | 0.4 |
| December | 0.8 | -0.4 | -1.8 | 0.7 | 0.3 | 0.9 | -0.2 | 0.2 | 0.1 |

**AVERAGE RETAIL PRICES OF SELECTED CONSUMER ITEMS, ADELAIDE
(Cents)**

| Item | Unit | Quarter | | | | | |
|--|----------|---------------|--------------|--------------|--------------|-------------------|------------------|
| | | Sept. 1992 | Dec. 1992 | Mar. 1993 | June 1993 | September 1993 | December 1993 |
| Milk, carton, supermarket sales | 1 litre | 86 | 86 | 89 | 90 | 91 | 95 |
| Cheese, processed, sliced, wrapped | 500g | 356 | 344 | 356 | 359 | 333 | 337 |
| Butter | 500g | 167 | 156 | 147 | 148 | 151 | 161 |
| Bread, white loaf, sliced, supermarket sales | 680g | 119 | 114 | 116 | 125 | 117 | 122 |
| Self-raising flour | 2kg | 218 | 198 | 192 | 197 | 202 | 188 |
| Beef: | | | | | | | |
| Rump steak | 1kg | 1,079 | 1,063 | 1,041 | 1,084 | 1,069 | 1,086 |
| Corned silverside | 1kg | 616 | 632 | 633 | 621 | 630 | 612 |
| Lamb: | | | | | | | |
| Leg | 1kg | 462 | 461 | 475 | 464 | 520 | 501 |
| Loin chops | 1kg | 555 | 584 | 648 | 640 | 694 | 665 |
| Forequarter chops | 1kg | 417 | 436 | 475 | 472 | 511 | 482 |
| Pork: | | | | | | | |
| Leg | 1kg | 586 | 603 | 610 | 582 | 585 | 609 |
| Loin chops | 1kg | 743 | 754 | 749 | 719 | 731 | 738 |
| Chicken, frozen | 1kg | 307 | 318 | 301 | 323 | 318 | 330 |
| Bacon, middle rashers | 250g pkt | 281 | 289 | 285 | 272 | 268 | 273 |
| Sausages | 1kg | 354 | 367 | 360 | 364 | 363 | 365 |
| Potatoes | 1kg | 69 | 95 | 68 | 83 | 71 | 72 |
| Onions | 1kg | 82 | 118 | 138 | 152 | 192 | 215 |
| Peaches, canned | 825g | 192 | 183 | 186 | 193 | 205 | 196 |
| Eggs, 55g | doz | 190 | 191 | 183 | 180 | 182 | 180 |
| Sugar, white | 2kg | 168 | 153 | 164 | 164 | 206 | 193 |
| Tea | 250g | 158 | 156 | 150 | 154 | 158 | 169 |
| Coffee, instant, jar | 150g | 403 | 409 | 397 | 399 | 398 | 397 |
| Margarine, polyunsaturated | 500g | 136 | 144 | 137 | 143 | 133 | 142 |
| Petrol, super grade | 1 litre | 68.8 | 71.1 | 69.1 | 70.4 | 70.0 | 70.2 |

**ESTIMATED RESIDENT POPULATION AND COMPONENTS OF POPULATION CHANGE
South Australia**

| Period | Components of Population Change | | | | | Total increase | Population at end of period |
|--------------------------|---------------------------------|--------|---------------------|---------------|--------------|-------------------|-----------------------------------|
| | Live births | Deaths | Natural increase | Net migration | | | |
| | | | | Interstate | Overseas (a) | | |
| ANNUAL ('000) | | | | | | | |
| 1982-83 | 19,445 | 10,339 | 9,106 | -328 | 6,417 | 14,667 | 1,345,775 |
| 1983-84 | 20,118 | 9,799 | 10,319 | 553 | 3,969 | 14,273 | 1,360,048 |
| 1984-85 | 19,901 | 10,204 | 9,697 | -2,317 | 4,329 | 11,149 | 1,371,197 |
| 1985-86 | 19,657 | 10,427 | 9,230 | -1,417 | 5,084 | 11,353 | 1,382,550 |
| 1986-87 | 19,628 | 10,577 | 9,051 | -3,977 | 6,200 | 10,214 | 1,392,764 |
| 1987-88 | 19,288 | 10,799 | 8,489 | -1,240 | 5,952 | 12,145 | 1,404,909 |
| 1988-89 | 19,445 | 10,781 | 8,664 | -221 | 6,665 | 14,120 | 1,419,029 |
| 1989-90 | 19,573 | 11,320 | 8,253 | -252 | 5,762 | 13,027 | 1,432,056 |
| 1990-91 | 19,841 | 11,074 | 8,767 | 1,545 | 4,619 | 14,243 | 1,446,299 |
| 1991-92 | 19,285 | 11,021 | 8,264 | -817 | 2,678 | 10,125 | 1,456,424 |
| 1992-93 | 19,586 | 11,129 | 8,457 | -4,975 | 1,815 | 5,297 | 1,461,721 |
| MONTHLY/QUARTERLY ('000) | | | | | | | |
| 1992-93 - | | | | | | | |
| October | 1,658 | 1,048 | .. | .. | .. | .. | .. |
| November | 2,016 | 857 | .. | .. | .. | .. | .. |
| December | 1,221 | 833 | 2,139 | -713 | 277 | 1,703 | 1,459,031 |
| January | 1,871 | 1,208 | .. | .. | .. | .. | .. |
| February | 1,381 | 848 | .. | .. | .. | .. | .. |
| March | 1,749 | 871 | 2,059 | -2,078 | 1,042 | 1,023 | 1,460,054 |
| April (p) | 1,792 | 737 | .. | .. | .. | .. | .. |
| May (p) | 1,368 | 890 | .. | .. | .. | .. | .. |
| June (p) | 1,843 | 876 | 2,479 | -850 | 38 | 1,667 | 1,461,721 |
| 1993-94 - | | | | | | | |
| July (p) | 1,563 | 1,106 | .. | .. | .. | .. | .. |
| August (p) | 1,800 | 1,183 | .. | .. | .. | .. | .. |
| September (p) | 1,791 | 868 | n.y.a. | n.y.a. | n.y.a. | n.y.a. | n.y.a. |
| October (p) | 2,035 | 1,180 | .. | .. | .. | .. | .. |
| November (p) | 1,488 | 927 | .. | .. | .. | .. | .. |
| December (p) | 1,456 | 763 | n.y.a. | n.y.a. | n.y.a. | n.y.a. | n.y.a. |

(a) Includes category jumping

(p) These figures are preliminary and subject to revision

LABOUR FORCE STATUS OF THE CIVILIAN POPULATION: South Australia

| Period | ('000) | | | | | Civilian population aged 15+ | (%) | | Participation rate |
|--|--------------|-----------|-----------|------------|-------|------------------------------|------------|----------|--------------------|
| | Labour force | | | Unemployed | Total | | Ages 15-19 | All ages | |
| | Employed | Full-time | Part-time | | | | | | |
| ANNUAL AVERAGE | | | | | | | | | |
| 1983-84 | 445.1 | 110.0 | 555.1 | 62.4 | 617.5 | 1,040.1 | 24.0 | 10.1 | 59.4 |
| 1984-85 | 457.0 | 117.7 | 574.7 | 58.5 | 633.2 | 1,057.7 | 22.1 | 9.2 | 59.9 |
| 1985-86 | 470.6 | 123.3 | 593.8 | 54.7 | 648.5 | 1,072.5 | 20.6 | 8.4 | 60.5 |
| 1986-87 | 474.1 | 132.0 | 606.1 | 60.1 | 666.2 | 1,087.2 | 22.1 | 9.0 | 61.3 |
| 1987-88 | 471.8 | 140.9 | 612.7 | 60.1 | 672.7 | 1,102.4 | 20.8 | 8.9 | 61.0 |
| 1988-89 | 492.8 | 145.7 | 638.4 | 54.9 | 693.4 | 1,117.3 | 17.7 | 7.9 | 62.1 |
| 1989-90 | 506.3 | 151.5 | 657.8 | 50.0 | 707.7 | 1,131.7 | 16.2 | 7.1 | 62.5 |
| 1990-91 | 500.7 | 160.2 | 660.8 | 64.0 | 724.9 | 1,146.2 | 19.2 | 8.8 | 63.2 |
| 1991-92 | 478.5 | 160.1 | 638.6 | 80.9 | 719.5 | 1,161.4 | 25.1 | 11.2 | 62.0 |
| 1992-93 | 476.3 | 167.6 | 643.9 | 83.4 | 727.3 | 1,171.1 | 26.6 | 11.5 | 62.1 |
| PERCENTAGE CHANGE FROM PREVIOUS YEAR, ANNUAL AVERAGE | | | | | | | | | |
| 1984-85 | 2.7 | 7.0 | 3.5 | -6.3 | 2.5 | 1.7 | n.a. | n.a. | n.a. |
| 1985-86 | 3.0 | 4.8 | 3.3 | -6.5 | 2.4 | 1.4 | | | |
| 1986-87 | 0.7 | 7.1 | 2.1 | 9.9 | 2.7 | 1.4 | | | |
| 1987-88 | -0.5 | 6.7 | 1.1 | 0.0 | 1.0 | 1.4 | | | |
| 1988-89 | 4.5 | 3.4 | 4.2 | -8.7 | 3.1 | 1.4 | | | |
| 1989-90 | 2.7 | 4.0 | 3.0 | -8.9 | 2.1 | 1.3 | | | |
| 1990-91 | -1.1 | 5.7 | 0.5 | 28.0 | 2.4 | 1.3 | | | |
| 1991-92 | -4.4 | -0.1 | -3.4 | 26.4 | -0.7 | 1.3 | | | |
| 1992-93 | -0.5 | 4.7 | 0.8 | 3.1 | 1.1 | 0.8 | | | |
| MONTHLY, ORIGINAL | | | | | | | | | |
| 1992-93 - | | | | | | | | | |
| November | 476.4 | 167.9 | 644.3 | 83.1 | 727.4 | 1,170.6 | 26.9 | 11.4 | 62.1 |
| December | 482.8 | 163.3 | 646.1 | 88.9 | 735.0 | 1,171.1 | 29.1 | 12.1 | 62.6 |
| January | 477.4 | 159.0 | 636.4 | 92.5 | 728.9 | 1,171.7 | 28.7 | 12.7 | 62.2 |
| February | 478.6 | 168.9 | 647.5 | 88.8 | 736.3 | 1,172.2 | 27.1 | 12.1 | 62.8 |
| March | 473.9 | 172.9 | 646.9 | 83.1 | 730.0 | 1,172.7 | 26.5 | 11.4 | 62.3 |
| April | 468.7 | 174.5 | 643.1 | 81.3 | 724.4 | 1,172.8 | 26.0 | 11.2 | 61.8 |
| May | 481.2 | 169.0 | 650.2 | 75.7 | 725.9 | 1,172.9 | 24.9 | 10.4 | 61.9 |
| June | 483.6 | 164.3 | 647.9 | 75.0 | 722.9 | 1,173.0 | 24.7 | 10.4 | 61.6 |
| 1993-94 - | | | | | | | | | |
| July | 481.7 | 165.6 | 647.2 | 73.9 | 721.1 | 1,173.3 | 24.8 | 10.2 | 61.5 |
| August | 472.3 | 169.4 | 641.7 | 71.3 | 713.0 | 1,173.6 | 26.6 | 10.0 | 60.8 |
| September | 476.4 | 170.6 | 647.0 | 76.1 | 723.1 | 1,174.0 | 26.9 | 10.5 | 61.6 |
| October | 475.8 | 166.4 | 642.2 | 79.8 | 722.1 | 1,174.5 | 28.6 | 11.1 | 61.5 |
| November | 476.0 | 171.6 | 647.7 | 78.0 | 725.6 | 1,175.1 | 30.3 | 10.7 | 61.8 |
| December | 489.1 | 169.1 | 658.3 | 81.5 | 739.8 | 1,175.6 | n.y.a. | 11.0 | 62.9 |
| January | 475.9 | 164.8 | 640.7 | 89.0 | 729.7 | 1,176.0 | n.y.a. | 12.2 | 62.1 |
| MONTHLY, TREND ESTIMATES | | | | | | | | | |
| 1992-93 - | | | | | | | | | |
| November | 477.0 | 167.4 | 644.4 | 86.0 | 730.4 | | n.a. | 11.8 | 62.4 |
| December | 476.2 | 167.6 | 643.8 | 86.0 | 729.7 | | | 11.8 | 62.3 |
| January | 475.1 | 167.9 | 643.0 | 85.3 | 728.3 | | | 11.7 | 62.2 |
| February | 474.5 | 168.1 | 642.6 | 84.1 | 726.7 | | | 11.6 | 62.0 |
| March | 475.1 | 168.0 | 643.1 | 82.4 | 725.5 | | | 11.4 | 61.9 |
| April | 476.9 | 167.6 | 644.5 | 80.3 | 724.8 | | | 11.1 | 61.8 |
| May | 479.0 | 167.2 | 646.2 | 78.2 | 724.4 | | | 10.8 | 61.8 |
| June | 480.5 | 166.9 | 647.4 | 76.6 | 724.0 | | | 10.6 | 61.7 |
| 1993-94 - | | | | | | | | | |
| July | 481.0 | 167.0 | 648.0 | 75.9 | 723.9 | | | 10.5 | 61.7 |
| August | 480.2 | 167.8 | 648.0 | 76.2 | 724.2 | | | 10.5 | 61.7 |
| September | 478.7 | 168.3 | 647.6 | 77.4 | 725.0 | | | 10.7 | 61.8 |
| October | 477.5 | 169.8 | 647.3 | 79.1 | 726.4 | | | 10.9 | 61.8 |
| November | 477.1 | 170.4 | 647.5 | 80.7 | 728.2 | | | 11.1 | 61.8 |
| December | 477.1 | 170.8 | 647.9 | 82.0 | 729.9 | | | 11.2 | 62.0 |
| January | 477.4 | 171.0 | 648.4 | 83.2 | 731.6 | | | 11.4 | 62.2 |
| PERCENTAGE CHANGE FROM PREVIOUS MONTH, TREND ESTIMATES | | | | | | | | | |
| 1992-93 - | | | | | | | | | |
| January | -0.2 | 0.2 | -0.1 | -0.8 | -0.2 | | | | |
| February | -0.1 | 0.1 | -0.1 | -1.4 | -0.2 | | | | |
| March | 0.1 | -0.1 | 0.1 | -2.0 | -0.2 | | | | |
| April | 0.4 | -0.2 | 0.2 | -2.5 | -0.1 | | | | |
| May | 0.4 | -0.2 | 0.3 | -2.6 | -0.1 | | | | |
| June | 0.3 | -0.2 | 0.2 | -2.0 | -0.1 | | | | |
| 1993-94 - | | | | | | | | | |
| July | 0.1 | 0.1 | 0.1 | -0.9 | 0.0 | | | | |
| August | -0.2 | 0.5 | 0.0 | 0.4 | 0.0 | | | | |
| September | -0.3 | 0.3 | -0.1 | 1.6 | 0.1 | | | | |
| October | -0.3 | 0.9 | 0.0 | 2.2 | 0.2 | | | | |
| November | -0.1 | 0.4 | 0.0 | 2.0 | 0.2 | | | | |
| December | 0.0 | 0.2 | 0.1 | 1.6 | 0.2 | | | | |
| January | 0.1 | 0.1 | 0.1 | 1.5 | 0.2 | | | | |

AVERAGE WEEKLY EARNINGS OF EMPLOYEES
South Australia

| Period | Full-time adults | | | | | | All employees | | |
|--|------------------------|---------|---------|----------------|---------|---------|---------------|---------|---------|
| | Ordinary time earnings | | | Total earnings | | | Males | Females | Persons |
| | Males | Females | Persons | Males | Females | Persons | | | |
| ANNUAL AVERAGE (\$ per week) | | | | | | | | | |
| 1982-83 | 336.8 | 275.3 | 319.2 | 347.2 | 278.6 | 327.4 | 315.9 | 198.5 | 268.7 |
| 1983-84 | 358.3 | 294.5 | 339.9 | 377.6 | 300.2 | 355.2 | 346.6 | 218.3 | 294.0 |
| 1984-85 | 381.9 | 319.3 | 364.8 | 407.4 | 325.8 | 385.1 | 367.2 | 238.7 | 316.2 |
| 1985-86 | 406.3 | 340.5 | 388.3 | 431.8 | 346.6 | 408.4 | 389.0 | 252.7 | 334.5 |
| 1986-87 | 431.8 | 363.7 | 412.2 | 455.9 | 370.2 | 431.2 | 411.8 | 268.9 | 352.2 |
| 1987-88 | 458.6 | 389.7 | 438.4 | 485.0 | 397.0 | 459.2 | 440.1 | 295.1 | 379.6 |
| 1988-89 | 481.5 | 424.3 | 465.7 | 517.6 | 435.1 | 494.9 | 473.4 | 315.1 | 408.5 |
| 1989-90 | 517.5 | 454.9 | 499.4 | 560.7 | 466.5 | 533.5 | 511.6 | 338.0 | 437.8 |
| 1990-91 | 561.3 | 486.1 | 537.9 | 598.9 | 496.1 | 566.9 | 546.7 | 358.1 | 462.0 |
| 1991-92 | 588.4 | 524.1 | 567.8 | 624.9 | 534.0 | 595.8 | 564.8 | 386.9 | 483.7 |
| 1992-93 | 610.1 | 534.9 | 585.4 | 646.4 | 546.8 | 613.7 | 560.0 | 382.6 | 477.4 |
| PERCENTAGE CHANGE FROM PREVIOUS YEAR | | | | | | | | | |
| 1983-84 | 6.4 | 7.0 | 6.5 | 8.8 | 7.8 | 8.5 | 9.7 | 10.0 | 9.4 |
| 1984-85 | 6.6 | 8.4 | 7.3 | 7.9 | 8.5 | 8.4 | 5.9 | 9.3 | 7.6 |
| 1985-86 | 6.4 | 6.6 | 6.4 | 6.0 | 6.4 | 6.1 | 5.9 | 5.9 | 5.8 |
| 1986-87 | 6.3 | 6.8 | 6.2 | 5.6 | 6.8 | 5.6 | 5.9 | 6.4 | 5.3 |
| 1987-88 | 6.2 | 7.1 | 6.4 | 6.4 | 7.2 | 6.5 | 6.9 | 9.7 | 7.8 |
| 1988-89 | 5.0 | 8.9 | 6.2 | 6.7 | 9.6 | 7.8 | 7.6 | 6.8 | 7.6 |
| 1989-90 | 7.5 | 7.2 | 7.2 | 8.3 | 7.2 | 7.8 | 8.1 | 7.3 | 7.2 |
| 1990-91 | 8.5 | 6.9 | 7.7 | 6.8 | 6.3 | 6.3 | 6.9 | 5.9 | 5.5 |
| 1991-92 | 4.8 | 7.8 | 5.6 | 4.3 | 7.6 | 5.1 | 3.3 | 8.0 | 4.7 |
| 1992-93 | 3.7 | 2.1 | 3.1 | 3.4 | 2.4 | 3.0 | -0.8 | -1.1 | -1.3 |
| QUARTERLY (\$ per week) | | | | | | | | | |
| 1991-92 - | | | | | | | | | |
| 16 August | 569.8 | 510.2 | 550.9 | 603.6 | 519.4 | 576.9 | 542.7 | 369.1 | 462.6 |
| 15 November | 587.1 | 519.8 | 565.8 | 626.0 | 531.2 | 596.0 | 565.9 | 381.9 | 481.7 |
| 21 February 92 | 592.7 | 537.3 | 575.1 | 632.6 | 546.4 | 605.2 | 574.9 | 401.1 | 497.2 |
| 15 May | 604.1 | 529.0 | 579.4 | 637.4 | 538.8 | 604.9 | 575.5 | 395.3 | 493.3 |
| 1992-93 - | | | | | | | | | |
| 21 August | 609.8 | 529.7 | 582.6 | 644.4 | 542.3 | 609.8 | 567.7 | 386.3 | 477.3 |
| 20 November | 610.3 | 532.8 | 585.0 | 647.6 | 543.9 | 613.7 | 547.1 | 377.0 | 469.9 |
| 19 February 93 | 610.1 | 533.3 | 584.8 | 648.5 | 543.9 | 614.1 | 559.5 | 381.6 | 477.7 |
| 20 May | 610.0 | 543.7 | 589.0 | 645.1 | 557.1 | 617.2 | 565.5 | 385.3 | 484.5 |
| 1993-94 - | | | | | | | | | |
| 20 August | 631.0 | 546.9 | 603.3 | 673.3 | 559.5 | 635.8 | 599.7 | 394.2 | 503.1 |
| PERCENTAGE CHANGE FROM CORRESPONDING REFERENCE DATE IN PREVIOUS YEAR | | | | | | | | | |
| 1991-92 - | | | | | | | | | |
| 16 August | 4.4 | 9.4 | 5.6 | 2.4 | 8.9 | 4.0 | 0.9 | 5.4 | 1.6 |
| 15 November | 4.7 | 7.4 | 5.3 | 4.5 | 7.5 | 5.1 | 3.1 | 5.2 | 2.9 |
| 21 February | 3.7 | 9.2 | 5.3 | 4.3 | 9.0 | 5.6 | 3.5 | 11.7 | 6.8 |
| 15 May | 6.6 | 5.4 | 6.0 | 6.2 | 5.3 | 5.7 | 5.7 | 9.8 | 7.4 |
| 1992-93 - | | | | | | | | | |
| 21 August | 7.0 | 3.8 | 5.8 | 6.8 | 4.4 | 5.7 | 4.6 | 4.7 | 3.2 |
| 20 November | 4.0 | 2.5 | 3.4 | 3.5 | 2.4 | 3.0 | -3.3 | -1.3 | -2.4 |
| 19 February | 2.9 | -0.7 | 1.7 | 2.5 | -0.5 | 1.5 | -2.7 | -4.9 | -3.9 |
| 20 May | 1.0 | 2.8 | 1.7 | 1.2 | 3.4 | 2.0 | -1.7 | -2.5 | -1.8 |
| 1993-94 - | | | | | | | | | |
| 20 August | 3.5 | 3.2 | 3.6 | 4.5 | 3.2 | 4.3 | 5.6 | 2.0 | 5.4 |
| PERCENTAGE CHANGE FROM PREVIOUS REFERENCE DATE | | | | | | | | | |
| 1991-92 - | | | | | | | | | |
| 15 November | 3.0 | 1.9 | 2.7 | 3.7 | 2.3 | 3.3 | 4.3 | 3.5 | 4.1 |
| 21 February | 1.0 | 3.4 | 1.6 | 1.1 | 2.9 | 1.5 | 1.6 | 5.0 | 3.2 |
| 15 May | 1.9 | -1.5 | 0.7 | 0.8 | -1.4 | 0.0 | 0.1 | -1.4 | -0.8 |
| 1992-93 - | | | | | | | | | |
| 21 August | 0.9 | 0.1 | 0.6 | 1.1 | 0.6 | 0.8 | -1.4 | -2.3 | -3.2 |
| 20 November | 0.1 | 0.6 | 0.4 | 0.5 | 0.3 | 0.6 | -3.6 | -2.4 | -1.6 |
| 19 February | 0.0 | 0.1 | 0.0 | 0.1 | 0.0 | 0.1 | 2.3 | 1.2 | 1.7 |
| 20 May | 0.0 | 2.0 | 0.7 | -0.5 | 2.4 | 0.5 | 1.1 | 1.0 | 1.4 |
| 1993-94 - | | | | | | | | | |
| 20 August | 3.4 | 0.6 | 2.4 | 4.4 | 0.4 | 3.0 | 6.0 | 2.3 | 3.8 |

TOURIST ACCOMMODATION
South Australia

| Period | Hotels, motels and guest houses with facilities | | | Holiday flats, units and houses | | | Short-term caravan parks | | |
|--|---|---------------------------|------------------|-----------------------------------|---------------------------|------------------|--------------------------|---------------------------|------------------|
| | Number of guest rooms | Room occupancy (per cent) | Takings (\$'000) | Number of flats, units and houses | Unit occupancy (per cent) | Takings (\$'000) | Number of sites | Site occupancy (per cent) | Takings (\$'000) |
| ANNUAL | | | | | | | | | |
| 1985-86 | 8,182 | 55.1 | 71,919 | n.a. | n.a. | n.a. | 19,409 | 18.4 | 11,017 |
| 1986-87 | 8,497 | 52.9 | 79,254 | n.a. | n.a. | n.a. | 18,773 | 18.1 | 12,647 |
| 1987-88 | 9,156 | 50.8 | 89,321 | 1,105 | 45.4 | 8,109 | 18,926 | 17.8 | 13,248 |
| 1988-89 | 9,396 | 50.5 | 102,737 | 1,171 | 45.8 | 9,792 | 19,195 | 17.4 | 14,711 |
| 1989-90 | 10,316 | 52.0 | 121,788 | 1,113 | 48.4 | 11,381 | 19,847 | 18.4 | 17,174 |
| 1990-91 | 10,445 | 48.0 | 128,634 | 1,210 | 43.9 | 10,339 | 19,794 | 17.7 | 18,102 |
| 1991-92 | 10,745 | 46.6 | 130,578 | 1,302 | 40.4 | 10,492 | 20,601 | 17.1 | 19,111 |
| 1992-93 | 10,632 | 46.5 | 129,882 | 1,338 | 40.2 | 10,740 | 20,038 | 22.3 | 20,115 |
| PERCENTAGE CHANGE FROM PREVIOUS YEAR | | | | | | | | | |
| 1986-87 | 3.8 | n.a. | 10.2 | n.a. | n.a. | n.a. | -3.3 | n.a. | 14.8 |
| 1987-88 | 7.8 | | 12.7 | n.a. | | n.a. | 0.8 | | 4.8 |
| 1988-89 | 2.6 | | 15.0 | 6.0 | | 20.8 | 1.4 | | 11.0 |
| 1989-90 | 9.8 | | 18.5 | -5.0 | | 18.2 | 3.4 | | 16.7 |
| 1990-91 | 1.3 | | 5.6 | 8.7 | | -9.2 | -0.3 | | 5.4 |
| 1991-92 | 2.9 | | 1.5 | 7.6 | | 1.5 | 4.1 | | 5.6 |
| 1992-93 | -1.1 | | -0.5 | 2.8 | | 2.4 | -2.7 | | 5.2 |
| QUARTERLY | | | | | | | | | |
| 1991-92 - September | 10,632 | 45.6 | 31,235 | 1,206 | 36.4 | 2,170 | 20,204 | 13.2 | 3,744 |
| December | 10,700 | 47.0 | 35,431 | 1,301 | 39.2 | 2,803 | 20,540 | 16.8 | 4,796 |
| March | 10,709 | 47.7 | 32,908 | 1,309 | 48.7 | 3,239 | 20,675 | 22.2 | 6,162 |
| June | 10,745 | 45.9 | 31,003 | 1,302 | 37.0 | 2,280 | 20,601 | 16.1 | 4,405 |
| 1992-93 - September | 10,743 | 45.1 | 30,435 | 1,279 | 34.0 | 2,213 | 20,661 | 17.8 | 3,901 |
| December | 10,763 | 47.8 | 36,063 | 1,323 | 40.0 | 2,905 | 20,462 | 22.1 | 5,167 |
| March | 10,739 | 47.0 | 32,210 | 1,313 | 49.9 | 3,263 | 20,159 | 26.6 | 6,084 |
| June | 10,632 | 46.2 | 31,175 | 1,338 | 36.8 | 2,359 | 20,038 | 22.8 | 4,961 |
| 1993-94 - September | 10,604 | 46.8 | 33,133 | 1,362 | 35.2 | 2,551 | 19,992 | 19.1 | 3,916 |
| PERCENTAGE CHANGE FROM PREVIOUS QUARTER | | | | | | | | | |
| 1991-92 - December | 0.6 | n.a. | 13.4 | 7.9 | n.a. | 29.2 | 1.7 | n.a. | 28.2 |
| March | 0.1 | | -7.1 | 0.6 | | 15.6 | 0.7 | | 28.4 |
| June | 0.3 | | -5.8 | -0.5 | | -29.6 | -0.4 | | -28.5 |
| 1992-93 - September | 0.0 | | -1.8 | -1.8 | | -2.9 | 0.3 | | -11.4 |
| December | 0.2 | | 18.5 | 3.4 | | 31.3 | -1.0 | | 32.5 |
| March | -0.2 | | -10.7 | -0.8 | | 12.3 | -1.5 | | 17.7 |
| June | -1.0 | | -3.2 | 1.9 | | -27.7 | -0.6 | | -18.5 |
| 1993-94 - September | -0.3 | | 6.3 | 1.8 | | 8.1 | -0.2 | | -21.1 |

(a) From September quarter 1992, caravan park sites etc permanently reserved but only casually occupied by their tenants have been recorded continuously as site nights occupied irrespective of whether the tenants of individual sites were in residence on any particular night. Therefore occupancy measures from that quarter are not comparable with those from previous quarters.

FINANCE COMMITMENTS
South Australia

| Period | <i>Secured housing finance commitments to individuals</i> | | | | | |
|--|---|----------------------------|---|--|--|---|
| | <i>Construction and purchase of dwellings</i> | | <i>Alterations and additions (\$ million)</i> | <i>Personal finance commitments (\$ million)</i> | <i>Commercial finance commitments (\$ million)</i> | <i>Lease finance commitments (\$ million)</i> |
| | <i>Number of dwelling units</i> | <i>Amount (\$ million)</i> | | | | |
| ANNUAL | | | | | | |
| 1982-83 | 20,318 | 565.0 | 30.7 | n.a. | n.a. | n.a. |
| 1983-84 | 27,968 | 894.0 | 45.2 | n.a. | n.a. | n.a. |
| 1984-85 | 28,484 | 1,127.6 | 48.2 | n.a. | n.a. | n.a. |
| 1985-86 | 21,714 | 920.1 | 48.9 | 1,203.9 | 3,492.7 | 339.8 |
| 1986-87 | 21,658 | 965.5 | 47.1 | 1,222.4 | 4,242.8 | 334.5 |
| 1987-88 | 26,582 | 1,266.6 | 47.0 | 1,448.9 | 6,486.6 | 392.1 |
| 1988-89 | 29,977 | 1,574.2 | 51.4 | 1,534.1 | 7,285.5 | 512.4 |
| 1989-90 | 25,650 | 1,438.2 | 45.8 | 1,525.7 | 6,926.4 | 445.4 |
| 1990-91 | 28,694 | 1,731.3 | 58.8 | 1,503.6 | 6,257.0 | 323.2 |
| 1991-92 | 31,765 | 2,083.8 | 88.8 | 1,456.7 | 6,666.4 | 256.2 |
| 1992-93 | 36,960 | 2,569.5 | 102.8 | 1,656.8 | 5,122.4 | 249.5 |
| PERCENTAGE CHANGE FROM PREVIOUS YEAR | | | | | | |
| 1983-84 | 37.7 | 58.2 | 47.2 | n.a. | n.a. | n.a. |
| 1984-85 | 1.8 | 26.1 | 6.6 | n.a. | n.a. | n.a. |
| 1985-86 | -23.8 | -18.4 | 1.5 | n.a. | n.a. | n.a. |
| 1986-87 | -0.3 | 4.9 | -3.7 | 1.5 | 21.5 | -1.6 |
| 1987-88 | 22.7 | 31.2 | -0.2 | 18.5 | 52.9 | 17.2 |
| 1988-89 | 12.8 | 24.3 | 9.4 | 5.9 | 12.3 | 30.7 |
| 1989-90 | -14.4 | -8.6 | -10.9 | -0.5 | -4.9 | -13.1 |
| 1990-91 | 11.9 | 20.4 | 28.4 | -1.4 | -9.7 | -27.4 |
| 1991-92 | 10.7 | 20.4 | 51.0 | -3.1 | 6.5 | -20.7 |
| 1992-93 | 16.4 | 23.3 | 15.8 | 13.7 | -23.2 | -2.6 |
| MONTHLY | | | | | | |
| 1992-93 - | | | | | | |
| October | 2,890 | 197.2 | 8.3 | 140.5 | 309.9 | 21.1 |
| November | 2,753 | 188.0 | 7.1 | 138.1 | 293.9 | 27.2 |
| December | 3,050 | 214.3 | 7.4 | 133.1 | 374.8 | 27.1 |
| January | 2,718 | 192.6 | 8.0 | 117.3 | 275.0 | 14.1 |
| February | 2,803 | 196.4 | 8.1 | 121.6 | 259.3 | 16.1 |
| March | 3,483 | 249.1 | 10.8 | 150.8 | 462.3 | 20.0 |
| April | 3,058 | 215.5 | 10.2 | 132.6 | 347.1 | 16.3 |
| May | 3,328 | 232.9 | 9.0 | 135.3 | 465.8 | 22.2 |
| June | 3,746 | 264.0 | 10.1 | 164.6 | 830.3 | 26.5 |
| 1993-94 - | | | | | | |
| July | 3,722 | 264.0 | 12.2 | 138.8 | 434.0 | 22.9 |
| August | 3,646 | 256.5 | 15.4 | 154.2 | 428.1 | 20.3 |
| September | 3,825 | 270.0 | 14.6 | 150.3 | 407.2 | 26.9 |
| October | 3,500 | 244.2 | 14.6 | 135.9 | 388.1 | 19.4 |
| November | 3,852 | 253.3 | 15.0 | 146.7 | 456.9 | 26.7 |
| December | 4,189 | 284.1 | 21.3 | 161.0 | 392.5 | 20.7 |
| PERCENTAGE CHANGE FROM PREVIOUS MONTH | | | | | | |
| 1992-93 - | | | | | | |
| November | -4.7 | -4.7 | -14.4 | -1.7 | -5.2 | 28.7 |
| December | 10.8 | 14.0 | 3.7 | -3.6 | 27.5 | -0.2 |
| January | -10.9 | -10.1 | 9.5 | -11.9 | -26.6 | -48.0 |
| February | 3.1 | 1.9 | 0.0 | 3.7 | -5.7 | 14.6 |
| March | 24.3 | 26.8 | 34.0 | 24.0 | 78.3 | 23.9 |
| April | -12.2 | -13.5 | -5.5 | -12.1 | -24.9 | -18.7 |
| May | 8.8 | 8.1 | -11.6 | 2.1 | 34.2 | 36.4 |
| June | 12.6 | 13.3 | 12.3 | 21.6 | 78.3 | 19.2 |
| 1993-94 - | | | | | | |
| July | -0.6 | 0.0 | 20.5 | -15.6 | -47.7 | -13.3 |
| August | -2.0 | -2.8 | 26.2 | 11.1 | -1.4 | -11.4 |
| September | 4.9 | 5.3 | -5.4 | -2.5 | -4.9 | 32.2 |
| October | -8.5 | -9.6 | 0.0 | -9.6 | -4.7 | -27.6 |
| November | 10.1 | 3.7 | 2.9 | 8.0 | 17.7 | 37.4 |
| December | 8.7 | 12.2 | 42.3 | 9.7 | -14.1 | -22.5 |

PUBLICATIONS SOURCE INDEX

- 1 *Australian National Accounts: State Accounts* (5242.0) Quarterly
- 2 *Foreign Trade, Australia: Merchandise Exports* (5432.0) Monthly
- 3 *Foreign Trade, Australia: Merchandise Imports* (5433.0) Monthly
- 4 *Retail Trade, Australia* (8501.0) Monthly
- 5 *Motor Vehicle Registrations, Australia, Preliminary* (9301.0) Monthly
- 6 *Tourist Accommodation, Australia* (8635.0) Quarterly
- 7 *State Estimates of Private New Capital Expenditure* (5646.0) Quarterly
- 8 *Building Approvals, Australia* (8731.0) Monthly
- 9 *Building Activity, Australia* (8752.0) Quarterly
- 9a *Building Activity, Australia: Dwelling Unit Commencements, Preliminary* (8750.0) Quarterly
- 10 *Engineering Construction Activity, Australia* (8762.0) Quarterly
- 11 *Manufacturing Production, Australia: Building Materials and Fittings* (8361.0) Monthly
- 12 *Manufacturing Production, Australia: Energy Products* (8368.0) Monthly
- 13 *Manufacturing Production, Australia: Food, Drink, Tobacco, Stock and Poultry Food* (8359.0) Monthly
- 14 *Livestock Products, Australia* (7215.0) Monthly
- 15 *Actual and Expected Private Mineral Exploration, Australia* (8412.0) Quarterly
- 16 *Consumer Price Index* (6401.0) Quarterly
- 17 *Price Index of Materials Used in House Building, Six State Capital Cities and Canberra* (6408.0) Monthly
- 18 *Price Index of Materials Used in Building Other Than House Building, Eight Capital Cities* (6407.0) Monthly
- 19 *House Price Indexes: Eight Capital Cities* (6416.0) Quarterly
- 20 *Australian Demographic Statistics* (3101.0) Quarterly
- 21 *The Labour Force, Australia, Preliminary* (6202.0) Monthly
- 22 *Job Vacancies and Overtime, Australia* (6354.0) Quarterly
- 23 *Industrial Disputes, Australia* (6321.0) Monthly
- 24 Unpublished overseas arrival and departure statistics on microfiche
- 25 *Average Weekly Earnings, States and Australia* (6302.0) Quarterly
- 26 *Award Rates of Pay Indexes, Australia* (6312.0) Monthly
- 27 *Housing Finance for Owner Occupation, Australia* (5609.0) Monthly
- 28 Unpublished statistics available from PC AUSSTATS
- 29 Unpublished statistics available from PC AUSSTATS
- 30 Unpublished statistics available from PC AUSSTATS
- 31 *Reserve Bank of Australia Bulletin*

ABS PUBLICATIONS AND PRODUCTS

Statistics collected by the ABS are generally made available to clients in published form. Some, including those not published, are available in one or more of the following forms: microfiche, magnetic tape, computer printout, CD, floppy disk, photocopy and clerically extracted tabulation.

Current publications produced by the ABS are listed in the *Catalogue of Publications and Products, Australia* (1101.0). The ABS also issues on Tuesdays and Fridays a *Publications Advice* (1105.0) which lists publications to be released in the next few days. The *Catalogue* and *Publications Advice* are available from any ABS Office.

To receive ABS publications on a regular basis contact the *ABS Publication Mailing Service* on (008) 02 0608

A range of statistics is available on electronic media. PC AUSSTATS is an on-line access to a database containing a wide range of statistics, available Australia-wide. In addition, selected economic, social and demographic statistics are released on DISCOVERY (Key *656#.) PC TELESTATS provides the main features from over 20 ABS main economic indicator publications which can be transferred to your personal computer (with pull down menus).

The *ABS Information Consultancy Service* has specialist staff to assist and advise clients with their statistical inquiries. For more detailed information about these services telephone the Information Officer on (08) 237 7100 or call at the ABS, 55 Currie Street or write to Information Service, ABS, GPO Box 2272, Adelaide 5001.

The ABS also provides a *Statistical Consultancy Service*, for expert assistance in survey, sample and questionnaire design, data collection, processing and analysis, and statistical modelling. For more information contact Gary Niedorfer, telephone (08) 237 7379.

SYMBOLS AND OTHER USAGES

- n.a. not available
- n.y.a. not yet available
- .. not applicable
- 0, 0.0 nil or rounded to zero

Where figures have been rounded, discrepancies may occur between sums of the component items and totals.



© Commonwealth of Australia 1994

Recommended retail price: \$10.50



2130740003943
SSN 1039-8880